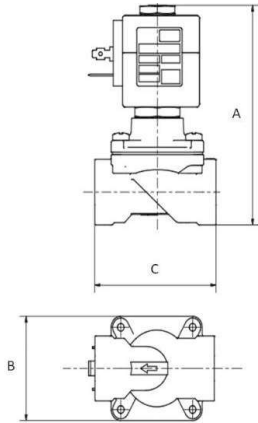


2 Ways Combined Acting





VALVE TYPE		DIMENSION A	DIMENSION B	DIMENSION C
R2MH G3/8	DN 13MM	98	46	58
R2MH G1/2	DN 13MM	98	46	58
R2MH G3/4	DN 19MM	109	56	78
R2MH G1	DN 25MM	122	74	95



2/2 Serie R2MH Normally Closed

CODE	Connection G ISO 228	Orifice mm	Kv m3/h	Differential Pressure (bar)		Coil		Seal	Temp. Range °C	
				Min	Max	Series	Width (mm)			
										AC
R2MHCCG#12//Coil	3/8"	13	2.2	0	10	10 (*)	3000	30	NBR=B	-10 +90
					12	12	3600	36		
R2MHCDG#12//Coil	1/2"	13	2.5	0	10	10 (*)	3000	30	EPDM=E	-10 +160
					12	12	3600	36		
R2MHCEG#18//Coil	3/4"	19	5.5	0	10	-	3000	30	FPM=V	-10 +160
					12	12	3600	36		
R2MHCFG#25//Coil	1"	25	10,2	0	10	6 (**)	3600	36		

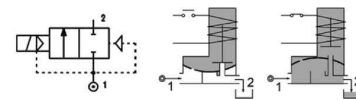
: Please select the sealing type required
 Example: R2MHCDGB12//300E; ISO G1/2" NBR
 Coil 230V AC 15VA

(*) with coil 3C01

(**) In case of use with ED >50% the nominal voltage tolerance to the coil has to be modified in +10% / -0%

Coils

SERIE	Coil P/N	Voltage	Nominal Power			Electrical connection	Connectors
			AC VA Inrush	AC VA Holding	DC Watt		
Series 3000 Width 30mm	3001	24V DC	-	-	10	DIN 43650A	On Demand
	3C01	24VDC	-	-	12		
	300B	24V AC	15	12	-		
	300D	110V AC	15	12	-		
	300E	230V AC	15	12	-		
Series 3600 Width 36mm	3601	24V DC	-	-	24	DIN 43650A	On Demand
	360B	24V AC	30	24	-		
	360D	110V AC	30	24	-		
	360E	230V AC	30	24	-		



DESCRIPTION

- Solenoid valve 2 ways, combined acting type.
- Brass body CW617N.

CONSTRUCTION

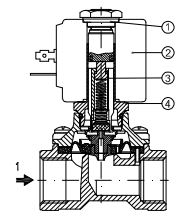
- Body: Brass CW614N
- Armature tube: Stainless steel Aisi 303
- Plunger and core: Stainless steel 430Fr
- Springs: Stainless steel Aisi 302
- Seal material: NBR - FPM - EPDM

FEATURES

- Maximum allowable pressure: 26bar
- Maximum fluid viscosity: 25cSt (mm2/s)
- Ambient temperature:
with class F coil -10°C +55°C
with class H coil -10°C +80°C
- Above 80°C please consult our tech department for the application fine tuning
- Preferred mounting position with vertical coil above

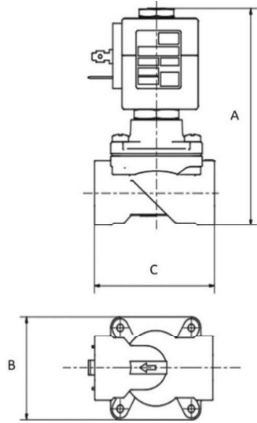
OPTIONS

- Electroless nickel plating
- Version for vacuum application (air/gas)
- Others on request



SPARE PARTS

1. Coil fixing nut
2. Coil
3. Mobile plunger assembly
4. Armature tube kit
5. Diaphragm assembly



VALVE TYPE	DIMENSION A	DIMENSION B	DIMENSION C	WEIGHT
R2IH G 3/8"	90	50	66	583
R2IH G 1/2"	90	50	66	583
R2IH G 3/4"	96	50	66	583
R2IH G 1"	103	61	86	810



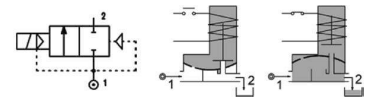
2/2 Serie R2IH Normally Closed

CODE	Connection G ISO 228	Orifice mm	Kv m3/h	Differential Pressure (bar)		Coil		Seal	Temp. Range °C	
				Min	Max	Series	Width (mm)			
										AC
R2IHCCGV12//Coil	3/8"	12	2.2	0	16	6	3000	30	FKM-V	-10 +140
					16	16	3600	36		
R2IHCdGV15//Coil	1/2"	15	2.5	0	10	6	3000	30		
					16	16	3600	36		
R2IHCEGV20//Coil	3/4"	20	5.5	0	10	6	3000	30		
					16	16	3600	36		
R2IHCFGV25//Coil	1"	25	10.2	0	10	8	3600	36		

: Please select the sealing type required
 Example: R2IHCdGV15//300E: ISO G1/2" FKM
 Coil 230V AC 15VA

Coils

SERIE	Coil P/N	Voltage	Nominal Power			Electrical connection	Connectors
			AC VA Inrush	AC VA Holding	DC Watt		
Series 3000 Width 30mm	3001	24V DC	-	-	10	DIN 43650A	On Demand
	3001	24VDC	-	-	12		
	300B	24V AC	15	12	-		
	300D	110V AC	15	12	-		
	300E	230V AC	15	12	-		
Series 3600 Width 36mm	3601	24V DC	-	-	24		
	360B	24V AC	30	24	-		
	360D	110V AC	30	24	-		
	360E	230V AC	30	24	-		



DESCRIPTION

- Solenoid valve 2 ways, combined acting type.
- Stainless Steel body AISI304.

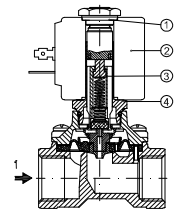
CONSTRUCTION

- Body: Stainless Steel AISI 304
- Armature tube: Stainless steel Aisi 303
- Plunger and core: Stainless steel 430Fr
- Springs: Stainless steel Aisi 302
- Seal material: FKM

FEATURES

- Maximum allowable pressure: 26bar
- Maximum fluid viscosity: 25cSt (mm2/s)
- Ambient temperature:
 - with class F coil -10°C +55°C
 - with class H coil -10°C +80°C
- Above 80°C please consult our tech department for the application fine tuning
- Preferred mounting position with vertical coil above

OPTIONS



SPARE PARTS

1. Coil fixing nut
2. Coil
3. Mobile plunger assembly
4. Armature tube kit
5. Diaphragm assembly