

# VALVES FOR FLAT SURFACES - TS SERIES - Ø 1"

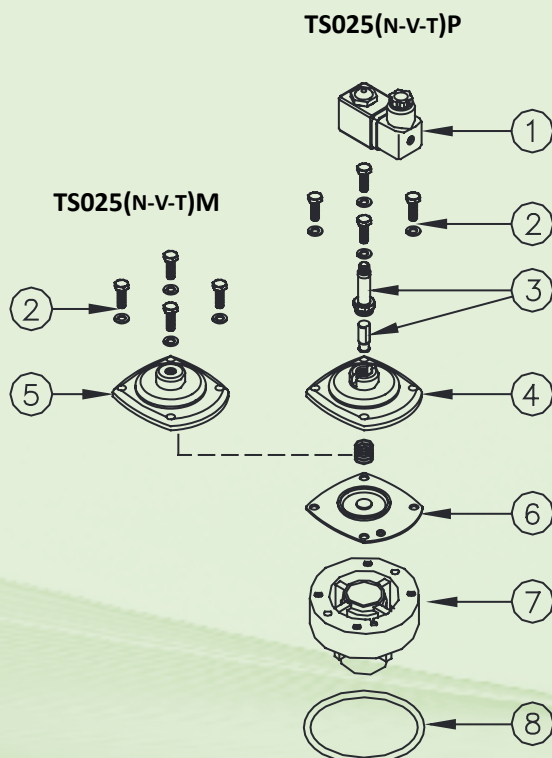


### FEATURES

Fluids	Non-lubricated filtered air
Operating temperature	Neoprene diaphragm -20°C +80°C
	Viton diaphragm -20°C +200°C
	Low T. diaphragm -40°C; +80°C
Operating pressure	between 0.5 and 7.5 bar
Body and cover	Die-cast aluminium
Pilot core	Stainless steel
Screws and bolts	Stainless steel
Coil insulation	Class H
Connector	PG 9 EN175301-803
Connector + coil protection	IP65 EN60529
Standard voltage	24V/50-60Hz (±10%) 19VA
	115V/50-60Hz (±10%) 19VA
	230V/50-60Hz (±10%) 19VA
	24VDC (± 10%) 18 Watt

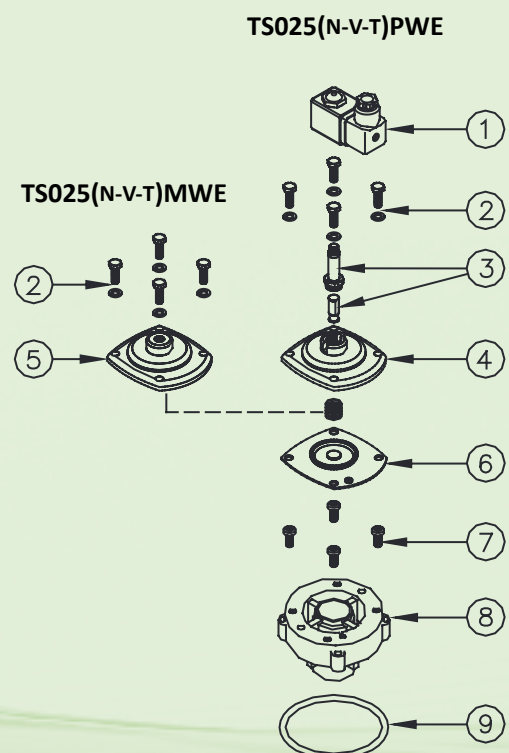
DESCRIPTION	TS025(N-V-T)P / TS025(N-V-T)M
<b>1</b> Coil - Connector	BH10 V## / V##
<b>2</b> Screws - Washers	TKITVTE06X20X4
<b>3</b> Pilot unit	1331080
<b>4</b> Pilot cover	1251750
<b>5</b> Remote cover	1251770
<b>6a</b> Diaphragm spring	3241002
<b>6</b> Diaphragm (N-V-T)	TKISM025N Neoprene
	TKISM025V Viton
	TKISM025T Low temperature
<b>7</b> Valve body	1251290
<b>8</b> O-R gasket	3301285

TSP version with built-in pilot / TSM version with remote pilot  
 V## / V## = 24 Vdc - 24 Vac - 115 Vac - 230 Vac



DESCRIPTION	TS025(N-V-T)PWE / TS025(N-V-T)MWE
<b>1</b> Coil - Connector	BH10 V## / V##
<b>2</b> Screws - Washers	TKITVTE06X20X4
<b>3</b> Pilot unit	1331080
<b>4</b> Pilot cover	1251750
<b>5</b> Remote cover	1251770
<b>6a</b> Diaphragm spring	3241002
<b>6</b> Diaphragm (N-V-T)	TKISM025N Neoprene
	TKISM025V Viton
	TKISM025T Low temperature
<b>7</b> Screws - Washers	TKITVTE06X16X4
<b>8</b> Valve body	1251300
<b>9</b> O-R gasket	3301285

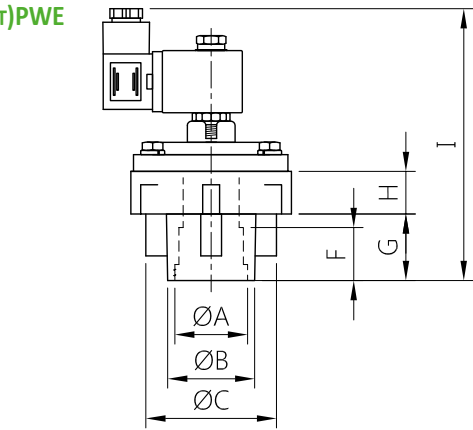
TSP version with built-in pilot / TSM version with remote pilot  
 V## / V## = 24 Vdc - 24 Vac - 115 Vac - 230 Vac



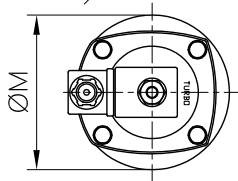
# TS SERIES - Ø 1" - OVERALL DIMENSIONS

DIAPHRAGM VALVES  
FOR FLAT SURFACES

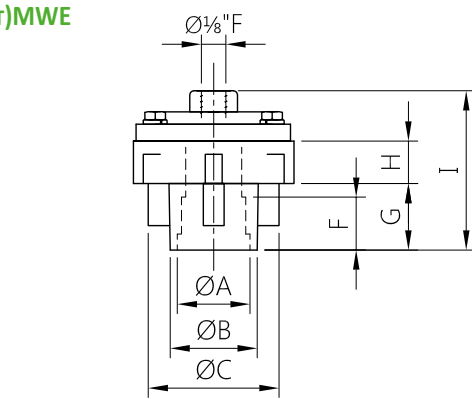
TS025(N-V-T)PWE



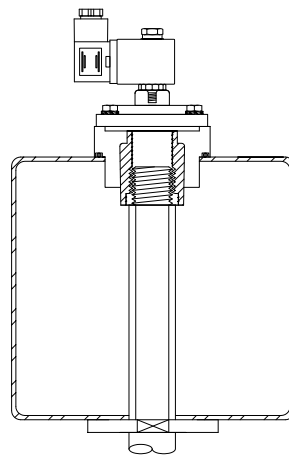
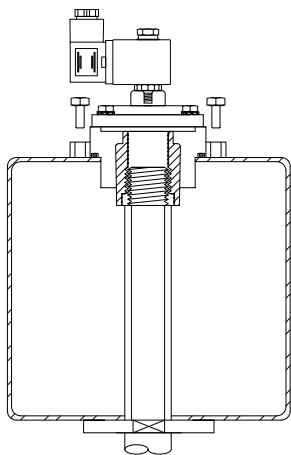
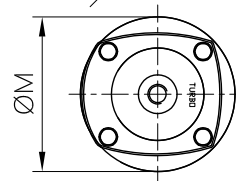
TS025(N-V-T)P



TS025(N-V-T)MWE



TS025(N-V-T)M



MODEL	ØA	ØB	ØC	ØD	ØE	ØM	F	G	H	I	L	Weight (kg)
TS025(N-V-T)PWE	1"	41.4	62.2	104	116	92	25	31.5	20.2	136	6.2	0.7
TS025(N-V-T)P	1"	41.4	62.2	-	-	92	25	31.5	20.2	136	6.2	0.7
TS025(N-V-T)MWE	1"	41.4	62.2	104	116	92	25	31.5	20.2	78	6.2	0.5
TS025(N-V-T)M	1"	41.4	62.2	-	-	92	25	31.5	20.2	78	6.2	0.5