

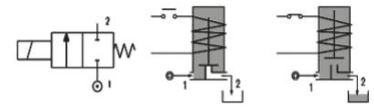
**2/2 Serie R2IC Normally Closed**

CODE	Connection G ISO 228	Orifice mm	Kv m3/h	Differential Pressure (bar)			Coil		Seal	Temp. Range °C
				Min	Max		Series	Width (mm)		
					AC	DC				
R2ICCBG#15/// Coil	1/4"	1.5	0.07	0	30	26	3000	30	NBR=B	-10 +90
R2ICCBG#20/// Coil		2	0.1	0	22	20				
R2ICCBG#25/// Coil		2.5	0.15	0	16	14				
R2ICCBG#35/// Coil		3.5	0.32	0	10	8				
R2ICCBG#45/// Coil		4.5	0.41	0	6.5	4				
R2ICCBG#52/// Coil	5.2	0.47	0	4	1.8					
R2ICCCG#30/// Coil	3/8"	3	0.25	0	15	10	3000	30	EPDM=E	-10 +160
R2ICCCG#35/// Coil		3.5	0.32	0	10	8				
R2ICCCG#40/// Coil		4	0.36	0	8	5				
R2ICCCG#45/// Coil		4.5	0.41	0	6.5	4				
R2ICCCG#52/// Coil	5.2	0.47	0	4	1.8					
R2ICCDG#30/// Coil	1/2"	3	0.25	0	15	10	3000	30	PTFE=P	-40 +180
R2ICCDG#35/// Coil		3.5	0.32	0	10	8				
R2ICCDG#40/// Coil		4	0.36	0	8	5				
R2ICCDG#45/// Coil		4.5	0.41	0	6.5	4				
R2ICCDG#52/// Coil	5.2	0.47	0	4	1.8					

# : Please select the sealing type required  
Example: R2ICCBG25//300I: ISO G3/4"NBR  
Coil 24V DC 10W

REMARK: The maximum allowable pressure PS for steam is 6bar with PTFE seals and 2,5bar with EPDM

Note: For Industrial Oxygen use application use FKM seals and max pressure is limited to 25bar.  
Example: R2ICCBG35/D/3001 G1/4" 3,5mm FKM  
24V DC 10W



**DESCRIPTION**

- Solenoid valve 2 ways, direct acting type.
- Stainless Steel AISI 303.
- Switching-On time 18ms.
- Switching-Off time 23ms.

**CONSTRUCTION**

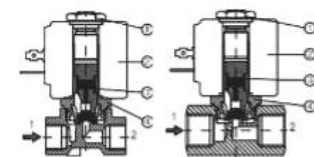
- Body: Stainless Steel AISI 303
- Armature tube: Stainless steel Aisi 303
- Plunger and core: Stainless steel 430Fr
- Springs: Stainless steel Aisi 302
- Seal material: NBR - FPM - EPDM - PTFE

**FEATURES**

- Maximum allowable pressure: 100bar\*
- Maximum fluid viscosity: 27cSt (mm2/s)
- Ambient temperature:  
with class F coil -10°C +55°C  
with class H coil -10°C +80°C
- Above 80°C please consult our tech department for the application fine tuning
- Universal mounting position

**OPTIONS**

- Manual override
- Degreased for Industrial Oxygen use
- /B: Back pressure resistant (for more details ask our tech. dept.)
- Others on request

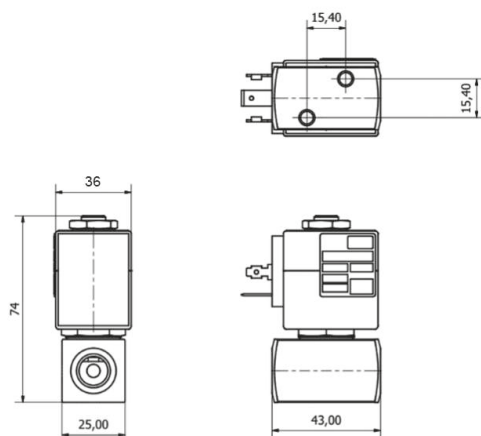


**SPARE PARTS**

1. Coil fixing nut
2. Coil
3. Mobile plunger assembly
4. Armature tube kit

**Coils**

SERIE	Product Serie	Voltage	Nominal Power			Electrical connection	Connectors
			AC VA Inrush	AC VA Holding	DC Watt		
Series 3000 Width 30mm	300I	24DC	-	-	10	DIN 43650A	On Demand
	300B	24 AC	15	12	-		
	300E	230 AC	15	12	-		



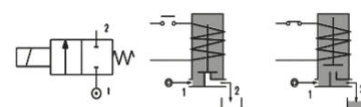
### 2/2 Serie R2IC Normally Closed

CODE	Connection G ISO 228	Orifice mm	Kv m3/h	Differential Pressure (bar)			Coil		Seal	Temp. Range °C
				Min	Max		Series	Width (mm)		
					AC	DC				
R2ICCBG#15/// Bob.	1/4"	1.5	0.07	0	80	80	3600	36	NBR=B	-10 +90
R2ICCBG#20/// Bob.		2	0.1	0	50	40				
R2ICCBG#25/// Bob.		2.5	0.15	0	35	32				
R2ICCBG#35/// Bob.		3.5	0.32	0	20	19				
R2ICCBG#45/// Bob.		4.5	0.41	0	14	13				
R2ICCBG#52/// Bob.		5.2	0.47	0	10	9				
R2ICCCG#30/// Bob.	3/8"	3	0.25	0	25	24	3600	36	EPDM=E	-10 +160
R2ICCCG#35/// Bob.		3.5	0.32	0	20	19				
R2ICCCG#45/// Bob.		4.5	0.41	0	14	13				
R2ICCCG#52/// Bob.		5.2	0.47	0	10	9				
R2ICCDG#30/// Bob.	1/2"	3	0.25	0	25	24	3600	36	PTFE = P	-40 +180
R2ICCDG#35/// Bob.		3.5	0.32	0	20	19				
R2ICCDG#45/// Bob.		4.5	0.41	0	14	13				
R2ICCDG#52/// Bob.		5.2	0.47	0	10	9				

# : Please select the sealing type required  
Example: R2ICCBG25///360I: ISO G1/4"NBR  
Coil 24V DC 24W

REMARK: The maximum allowable pressure PS for steam is 6bar with PTFE seals and 2.5bar with EPDM

Note: For Industrial Oxygen use application use FKM seals and max pressure is limited to 25bar.  
Example: R2ICCBGV35/O/360I G1/4" 3.5mm FKM 24V DC 24W



#### DESCRIPTION

- Solenoid valve 2 ways, direct acting type.
- Stainless Steel AISI 303.
- Switching-On time 18ms.
- Switching-Off time 23ms.

#### CONSTRUCTION

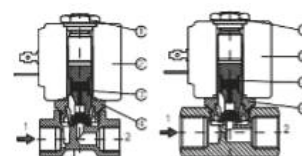
- Body: Stainless Steel AISI 303
- Armature tube: Stainless steel Aisi 303
- Plunger and core: Stainless steel 430Fr
- Springs: Stainless steel Aisi 302
- Seal material: NBR - FPM - EPDM - PTFE

#### FEATURES

- Maximum allowable pressure: 100bar\*
- Maximum fluid viscosity: 27cSt (mm2/s)
- Ambient temperature:  
with class F coil -10°C +55°C  
with class H coil -10°C +80°C
- Above 80°C please consult our tech department for the application fine tuning
- Universal mounting position

#### OPTIONS

- Manual override
- Degreased for Industrial Oxygen use
- /B: Back pressure resistant (for more details ask our tech. dept.)
- Others on request



#### SPARE PARTS

1. Coil fixing nut
2. Coil
3. Mobile plunger assembly
4. Armature tube kit

### Coils

SERIE	Product Serie	Voltage	Nominal Power			Electrical connection	Connectors
			AC VA Inrush	AC VA Holding	DC Watt		
Series 3600 Width 36mm	360I	24DC	-	-	24	DIN 43650A	On Demand
	360B	24 AC	30	24	-		
	360E	230 AC	30	24	-		