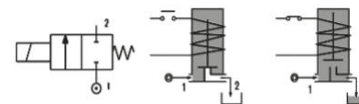


2/2 Serie R2AB Normally Close

CODE	Connection G ISO 228	Orifice mm	Kv m³/h	Differential Pressure (bar)			Coil		Seal	Temp. Range °C
				Min	AC	DC	Series	Width (mm)		
R2ABCAG#12/// Coil	1/8"	1.2	0.045	0	25	25	2800	22	NBR=B	-10 +90
R2ABCAG#15/// Coil		1.5	0.06	0	16	16				
R2ABCAG#20/// Coil		2.0	0.09	0	12	10				
R2ABCAG#25/// Coil		2.5	0.15	0	8	6				
R2ABCAG#30/// Coil		3.0	0.20	0	5	3				
R2ABCAG#40/// Coil	1/8"	4.0	0.35	0	4	2	3A00	30	EPDM=E	-10 +160
R2ABCAG#20/// Coil		2.0	0.09	0	25	15				
R2ABCAG#25/// Coil		2.5	0.15	0	16	8				
R2ABCAG#30/// Coil		3.0	0.20	0	8	5				
R2ABCAG#40/// Coil		4.0	0.35	0	5	3				



DESCRIPTION

- Solenoid valve 2 ways, direct acting type.
- Brass body CW617N.
- Switching-On time 15ms.
- Switching-Off time 20ms.

CONSTRUCTION

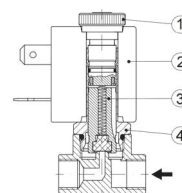
- Body: Brass CW614N
- Armature tube: Brass CW614N
- Plunger and core: Stainless steel - 430Fr
- Springs: Stainless steel - Aisi 302
- Seal material: NBR - FPM - EPDM

FEATURES

- Maximum allowable pressure: 100bar*
- Maximum fluid viscosity: 27cSt (mm2/s)
- Ambient temperature:
Class F coil -10°C +55°C
Class H coil -10°C +80°C
- Above 80°C please consult our tech department for the application fine tuning
- Universal mounting

OPTIONS

- Manual override
- Degreased for Industrial Oxygen use
- Electroless nickel plating
- Others on request



SPARE PARTS

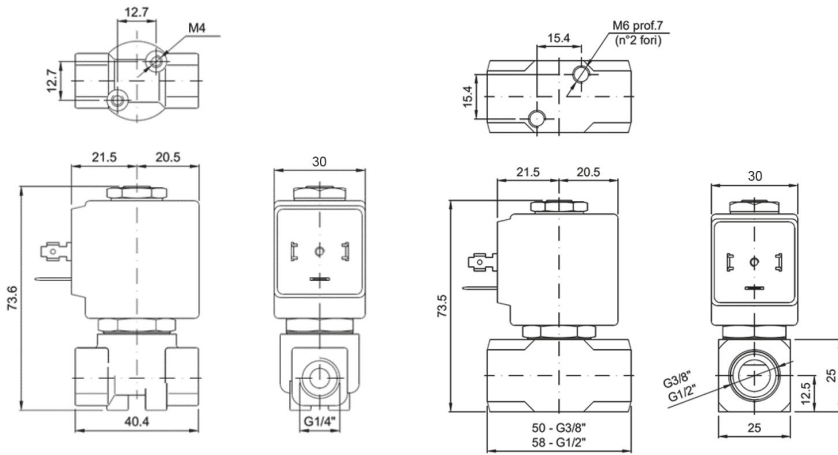
1. Coil fixing nut
2. Coil
3. Mobile plunger assembly
4. Armature tube kit

: Please select the sealing type required
Example: R2ABAGB25///2801: ISO G1/8"NBR
Coil 24V DC 7W

Note: For Industrial Oxygen use application FKM sealing have to be used and Max pressure is limited to 25 bar
Example: R2ABAGV25/O/2801 G1/8" 2,5mm FKM 24VDC

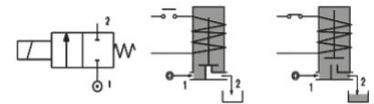
Coils

SERIE	Coil P/N	Voltage	Nominal Power			Electrical connection	Connectors
			AC VA Inrush	AC VA Holding	DC Watt		
Series 2800 Width 22mm	2801	24 DC	-	-	7	Industrial Standard 22 mm	On Demand
	280B	24 AC	11,5	9	-		
	280D	110 AC	11,5	9	-		
	280E	230 AC	11,5	9	-		
Series 3A00 Width 30mm	3A01	24 DC	-	-	8	DIN 43650A	On Demand
	3A0B	24 AC	11	8,5	-		
	3A0E	230 AC	11	8,5	-		



2/2 Serie R2AC Normally Close

CODE	Connection	Orifice	Kv	Differential Pressure (bar)			Coil		Seal	Temp. Range					
				Min	Max		Series	Width (mm)							
					AC	DC					°C				
R2ACCAG#12/// Coil	1/8"	1,2	0.05	0	100	60	3000	30	NBR=B	-10 +90					
R2ACCAG#15/// Coil		1,5	0.07	0	30	25									
R2ACCAG#20/// Coil		2	0.1	0	22	20									
R2ACCAG#25/// Coil		2,5	0.15	0	16	15									
R2ACCAG#30/// Coil		3	0.25	0	15	10									
R2ACCAG#35/// Coil		3,5	0.32	0	10	8									
R2ACCBG#12/// Coil	1/4"	1,2	0.05	0	100	60	3000	30	EPDM=E	-10 +160					
R2ACCBG#15/// Coil		1,5	0.07	0	30	25									
R2ACCBG#20/// Coil		2	0.1	0	22	20									
R2ACCBG#25/// Coil		2,5	0.15	0	16	15									
R2ACCBG#30/// Coil		3	0.25	0	15	10									
R2ACCBG#35/// Coil		3,5	0.32	0	10	8									
R2ACCBG#45/// Coil	3/8"	4,5	0.41	0	7	4	3000	30	FPM=V	-10 +160					
R2ACCBG#52/// Coil		5,2	0.47	0	4	1.8									
R2ACCCG#30/// Coil		3/8"	3	0.25	0	15					10	3000	30	PTFE=P	-10 +180
R2ACCCG#35/// Coil			3,5	0.32	0	10					8				
R2ACCCG#40/// Coil			4	0.36	0	8					5				
R2ACCCG#45/// Coil			4,5	0.41	0	6					4				
R2ACCCG#52/// Coil	5,2	0.47	0	4	1.8										
R2ACCDG#30/// Coil	1/2"	3	0.25	0	15	10	3000	30	PTFE=P	-10 +180					
R2ACCDG#35/// Coil		3,5	0.32	0	10	8									
R2ACCDG#40/// Coil		4	0.36	0	8	5									
R2ACCDG#45/// Coil		4,5	0.41	0	6	4									
R2ACCDG#52/// Coil	5,2	0.47	0	4	1.8										



DESCRIPTION

- Solenoid valve 2 ways, direct acting type.
- Brass body CW617N.
- Switching-On time 18ms.
- Switching-Off time 23ms.

CONSTRUCTION

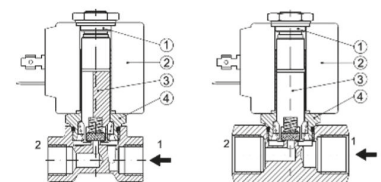
- Body: Brass CW614N
- Armature tube: Stainless steel Aisi 303
- Plunger and core: Stainless steel 430Fr
- Springs: Stainless steel Aisi 302
- Seal material: NBR - FPM - EPDM - PTFE

FEATURES

- Maximum allowable pressure: 100bar*
- Maximum fluid viscosity: 27cSt (mm2/s)
- Ambient temperature: with class F coil -10°C +55°C with class H coil -10°C +80°C
- Above 80°C please consult our tech department for the application fine tuning
- Universal mounting position

OPTIONS

- Manual override
- /R: Stainless steel orifice (up to 4,5mm orifice)
- Degreased for Industrial Oxygen use
- Electroless nickel plating
- Others on request



SPARE PARTS

1. Coil fixing nut
2. Coil
3. Mobile plunger assembly
4. Armature tube kit

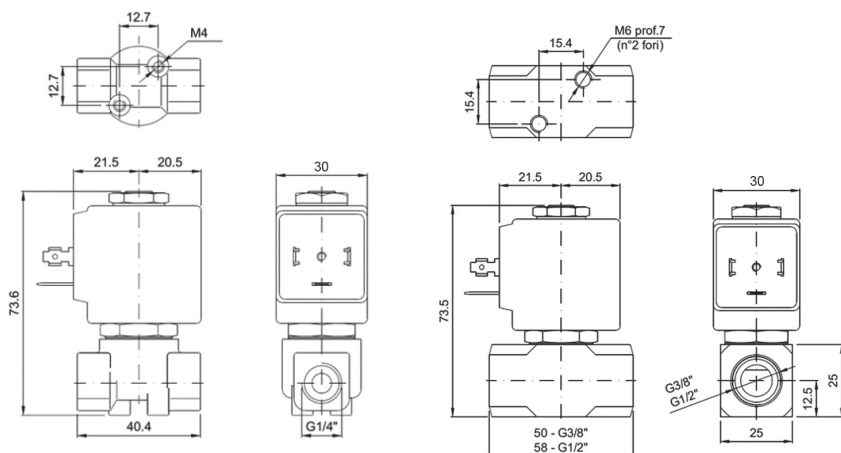
: Please select the sealing type required
Example: R2ACCBG25///300I: ISO G1/4"NBR Coil 24V DC 10W

REMARK: The maximum allowable pressure PS for steam is 10bar with PTFE seals and 2,5bar with EPDM

Note: For Industrial Oxygen use application use FKM seals and max pressure is limited to 25bar.
Example: R2ACCBGV35/0/300I G1/4" 3,5mm FKM 24V DC 10W

Coils

SERIE	Coil P/N	Voltage	Nominal Power			Electrical connection	Connectors
			AC VA Inrush	AC VA Holding	DC Watt		
Series 3000 Width 30mm	300I	24DC	-	-	10	DIN 43650A	On Demand
	300B	24 AC	15	12	-		
	300E	230 AC	15	12	-		



2/2 Serie R2AC Normally Close

CODE	Connection G ISO 228	Orifice mm	Kv m3/h	Differential Pressure (bar)			Coil		Seal	Temp. Range °C
				Min	Max		Series	Width (mm)		
					AC	DC				
R2ACCAG#12/// Coil	1/8"	1.2	0.05	0	100	100	3600	36	NBR=B	-10 +90
R2ACCAG#15/// Coil		1.5	0.07	0	80	80				
R2ACCAG#20/// Coil		2	0.1	0	50	40				
R2ACCAG#25/// Coil		2.5	0.15	0	35	32				
R2ACCAG#35/// Coil		3.5	0.32	0	20	19				
R2ACCBG#12/// Coil	1/4"	1.2	0.05	0	100	100	3600	36	NBR=B	-10 +90
R2ACCBG#15/// Coil		1.5	0.07	0	80	80				
R2ACCBG#20/// Coil		2	0.1	0	50	40				
R2ACCBG#25/// Coil		2.5	0.15	0	35	32				
R2ACCBG#35/// Coil		3.5	0.32	0	20	19				
R2ACCBG#45/// Coil	3/8"	4.5	0.41	0	14	13	3600	36	EPDM=E	-10 +160
R2ACCBG#52/// Coil		5.2	0.47	0	10	9				
R2ACCCG#30/// Coil		3	0.25	0	25	24				
R2ACCCG#35/// Coil	1/2"	3.5	0.32	0	20	19	3600	36	FPM=V	-10 +160
R2ACCCG#40/// Coil		4	0.36	0	16	15				
R2ACCCG#45/// Coil		4.5	0.41	0	14	13				
R2ACCCG#52/// Coil		5.2	0.47	0	10	9				
R2ACCCG#64/// Coil		6.4	0.64	0	5	4				
R2ACCDG#30/// Coil	1/2"	3	0.25	0	25	24	3600	36	PTFE=P	-10 +180
R2ACCDG#35/// Coil		3.5	0.32	0	20	19				
R2ACCDG#40/// Coil		4	0.36	0	16	15				
R2ACCDG#45/// Coil		4.5	0.41	0	14	13				
R2ACCDG#52/// Coil		5.2	0.47	0	10	9				
R2ACCDG#64/// Coil	6.4	0.64	0	5	4					

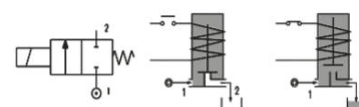
: Please select the sealing type required
Example: R2ACCBG25///3601: ISO G1/4"NBR
Coil 24V DC 27W

REMARK: The maximum allowable pressure PS for steam is 10bar with PTFE seals and 2.5bar with EPDM

Note: For Industrial Oxygen use application use FKM seals and max pressure is limited to 25bar.
Example: R2ACCBG35//Q/3601 G1/4" 3,5mm FKM 24V DC 27W

Coils

SERIE	Coil P/N	Voltage	Nominal Power			Electrical connection	Connectors
			AC VA Inrush	AC VA Holding	DC Watt		
Series 3600 Width 36mm	3601	24DC	-	-	24	DIN 43650A	On Demand
	360B	24 AC	30	24	-		
	360E	230 AC	30	24	-		



DESCRIPTION

- Solenoid valve 2 ways, direct acting type.
- Brass body CW617N.
- Switching-On time 18ms.
- Switching-Off time 23ms.

CONSTRUCTION

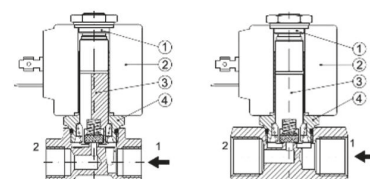
- Body: Brass CW614N
- Armature tube: Stainless steel Aisi 303
- Plunger and core: Stainless steel 430Fr
- Springs: Stainless steel Aisi 302
- Seal material: NBR - FPM - EPDM - PTFE

FEATURES

- Maximum allowable pressure: 100bar*
- Maximum fluid viscosity: 27cSt (mm2/s)
- Ambient temperature:
with class F coil -10°C +55°C
with class H coil -10°C +80°C
- Above 80°C please consult our tech department for the application fine tuning
- Universal mounting position

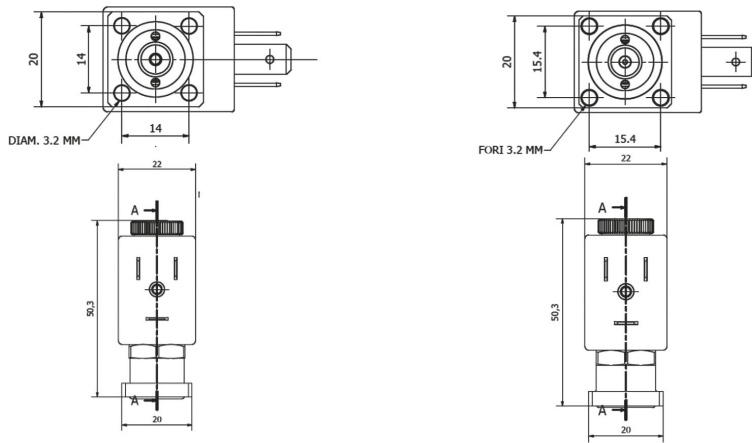
OPTIONS

- Manual override
- /R: Stainless steel orifice (up to 4,5mm orifice)
- Degreased for Industrial Oxygen use
- Electroless nickel plating
- Others on request



SPARE PARTS

1. Coil fixing nut
2. Coil
3. Mobile plunger assembly
4. Armature tube kit



2/2 Serie R2XB Normally Close

CODE	Connection G ISO 228	Orifice mm	Kv m3/h	Differential Pressure (bar)			Coil		Seal	Temp. Range °C
				Min	Max		Series	Width (mm)		
					AC	DC				
R2XBCXG#15/// Coil	Sub Base 20X20 with 14mm fixing holes	1.5	0.06	0	16	16	2800	30	NBR=B	-10 +90
R2XBCXG#20/// Coil		2.0	0.09	0	12	10				
R2XCCYG#20/// Coil	Sub Base 20X20 with 15.4mm fixing holes	1.5	0.06	0	16	16	2800	30	FPM=V	-10 +160
R2XCCYG#25/// Coil		2.0	0.09	0	12	10				

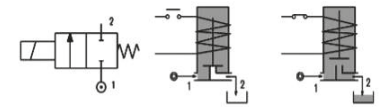
: Please select the sealing type required
Example: R2XBCXGB15///2801: Flanged 1,5mm NBR
Coil 24V DC 7W

REMARK: The maximum allowable pressure PS for steam is 6bar with PTFE seals and 2,5bar with EPDM

Note: For Industrial Oxygen use application use FKM seals and max pressure is limited to 25bar.
Example: R2XBCXGV15/0/2801 1,5mm FKM
Coil 24V DC 7W

Coils

SERIE	Coil P/N	Voltage	Nominal Power			Electrical connection	Connectors
			AC VA Inrush	AC VA Holding	DC Watt		
Series 2800 Width 22mm	2801	24DC	-	-	7	DIN 43650A	On Demand
	280B	24 AC	11,5	9	-		
	280E	230 AC	11,5	9	-		



DESCRIPTION

- Solenoid valve 2 ways, direct acting type.
- Brass body CW617N.
- Switching-On time 15ms.
- Switching-Off time 20ms.

CONSTRUCTION

- Body: Brass CW614N
- Armature tube: Stainless steel Aisi 303
- Plunger and core: Stainless steel 430Fr
- Springs: Stainless steel Aisi 302
- Seal material: NBR - FPM - EPDM

FEATURES

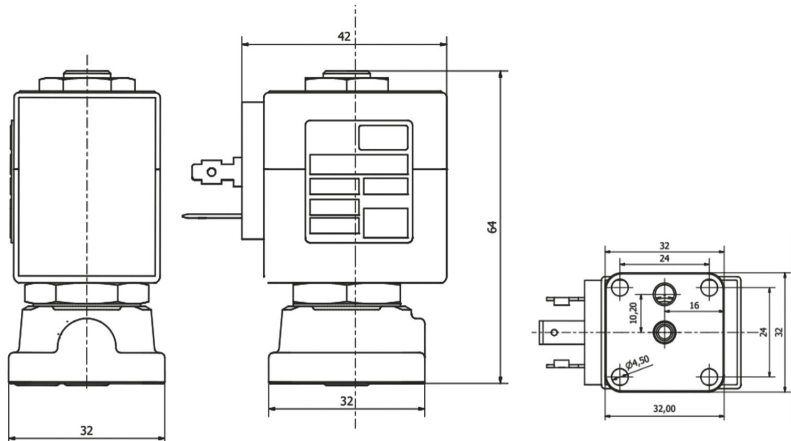
- Maximum allowable pressure: 45bar*
- Maximum fluid viscosity: 27cSt (mm2/s)
- Ambient temperature:
with class F coil -10°C +55°C
with class H coil -10°C +80°C
- Above 80°C please consult our tech department for the application fine tuning
- Universal mounting position

OPTIONS

- Manual override
- Electroless nickel plating
- Others on request

SPARE PARTS

1. Coil fixing nut
2. Coil
3. Mobile plunger assembly
4. Armature tube kit



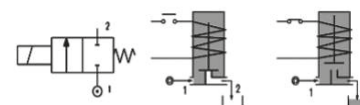
2/2 Serie R2XC Normally Close

CODE	Connection G ISO 228	Orifice mm	Kv m3/h	Differential Pressure (bar)			Coil		Seal	Temp. Range °C
				Min	Max		Series	Width (mm)		
					AC	DC				
R2XCCXG#12/// Coil	Sub Base	1.2	0.05	0	100	100	3000	30	NBR=B	-10 +90
R2XCCXG#15/// Coil		1.5	0.07	0	30	25			EPDM=E	-10 +160
R2XCCXG#20/// Coil		2	0.1	0	22	20			FPM=V	-10 +160
R2XCCXG#25/// Coil		2.5	0.15	0	16	15			PTFE	-40 +180

: Please select the sealing type required
Example: R2XCCXGB15///3001: ISO G1/4"NBR
Coil 24V DC 10W

REMARK: The maximum allowable pressure PS for steam is 6bar with PTFE seals and 2,5bar with EPDM

Note: For Industrial Oxygen use application use FKM seals and max pressure is limited to 25bar.
Example: R2XCCXGV35//Q/3001 G1/4" 3,5mm FKM 24V DC 10W



DESCRIPTION

- Solenoid valve 2 ways, direct acting type.
- Brass body CW617N.
- Switching-On time 18ms.
- Switching-Off time 23ms.

CONSTRUCTION

- Body: Brass CW614N
- Armature tube: Stainless steel Aisi 303
- Plunger and core: Stainless steel 430F8
- Springs: Stainless steel Aisi 302
- Seal material: NBR - FPM - EPDM - PTFE

FEATURES

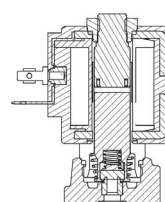
- Maximum allowable pressure: 100bar*
- Maximum fluid viscosity: 27cSt (mm2/s)
- Ambient temperature:
with class F coil -10°C +55°C
with class H coil -10°C +80°C
- Above 80°C please consult our tech department for the application fine tuning
- Universal mounting position

OPTIONS

- Manual override
- Electroless nickel plating
- Others on request

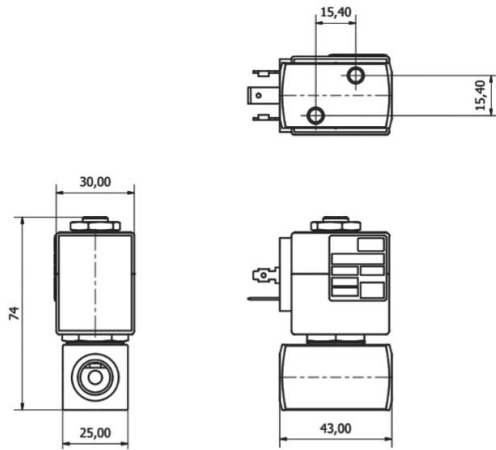
Coils

SERIE	Coil P/N	Voltage	Nominal Power			Electrical connection	Connectors
			AC VA Inrush	AC VA Holding	DC Watt		
Series 3000 Width 30mm	3001	24DC	-	-	10	DIN 43650A	On Demand
	300B	24 AC	15	12	-		
	300E	230 AC	15	12	-		



SPARE PARTS

1. Coil fixing nut
2. Coil
3. Mobile plunger assembly
4. Armature tube kit



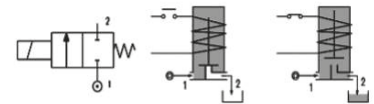
2/2 Serie R2IC Normally Closed

CODE	Connection G ISO 228	Orifice mm	Kv m3/h	Differential Pressure (bar)			Coil		Seal	Temp. Range °C
				Min	Max		Series	Width (mm)		
					AC	DC				
R2ICCBG#15/// Coil	1/4"	1.5	0.07	0	30	26	3000	30	NBR=B	-10 +90
R2ICCBG#20/// Coil		2	0.1	0	22	20				
R2ICCBG#25/// Coil		2.5	0.15	0	16	14				
R2ICCBG#35/// Coil		3.5	0.32	0	10	8				
R2ICCBG#45/// Coil		4.5	0.41	0	6.5	4				
R2ICCBG#52/// Coil	5.2	0.47	0	4	1.8	3000	30	EPDM=E	-10 +160	
R2ICCCG#30/// Coil	3/8"	3	0.25	0	15					10
R2ICCCG#35/// Coil		3.5	0.32	0	10					8
R2ICCCG#40/// Coil		4	0.36	0	8					5
R2ICCCG#45/// Coil		4.5	0.41	0	6.5					4
R2ICCCG#52/// Coil		5.2	0.47	0	4	1.8				
R2ICCDG#30/// Coil	1/2"	3	0.25	0	15	10	3000	30	PTFE=P	-40 +180
R2ICCDG#35/// Coil		3.5	0.32	0	10	8				
R2ICCDG#40/// Coil		4	0.36	0	8	5				
R2ICCDG#45/// Coil		4.5	0.41	0	6.5	4				
R2ICCDG#52/// Coil		5.2	0.47	0	4	1.8				

: Please select the sealing type required
Example: R2ICCBG25///300I: ISO G3/4"NBR
Coil 24V DC 10W

REMARK: The maximum allowable pressure PS for steam is 6bar with PTFE seals and 2,5bar with EPDM

Note: For Industrial Oxygen use application use FKM seals and max pressure is limited to 25bar.
Example: R2ICCBG35/D/3001 G1/4" 3,5mm FKM
24V DC 10W



DESCRIPTION

- Solenoid valve 2 ways, direct acting type.
- Stainless Steel AISI 303.
- Switching-On time 18ms.
- Switching-Off time 23ms.

CONSTRUCTION

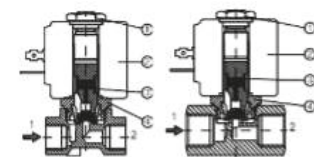
- Body: Stainless Steel AISI 303
- Armature tube: Stainless steel Aisi 303
- Plunger and core: Stainless steel 430Fr
- Springs: Stainless steel Aisi 302
- Seal material: NBR - FPM - EPDM - PTFE

FEATURES

- Maximum allowable pressure: 100bar*
- Maximum fluid viscosity: 27cSt (mm2/s)
- Ambient temperature:
with class F coil -10°C +55°C
with class H coil -10°C +80°C
- Above 80°C please consult our tech department for the application fine tuning
- Universal mounting position

OPTIONS

- Manual override
- Degreased for Industrial Oxygen use
- /B: Back pressure resistant (for more details ask our tech. dept.)
- Others on request

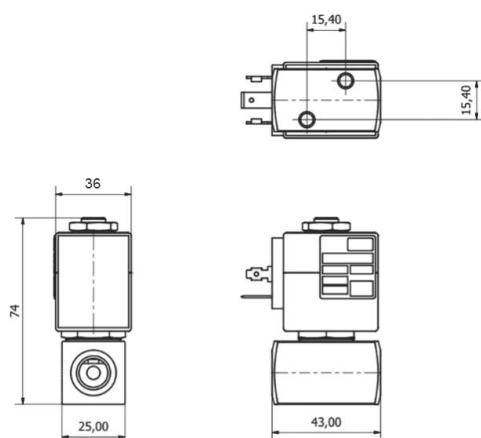


SPARE PARTS

1. Coil fixing nut
2. Coil
3. Mobile plunger assembly
4. Armature tube kit

Coils

SERIE	Product Serie	Voltage	Nominal Power			Electrical connection	Connectors
			AC VA Inrush	AC VA Holding	DC Watt		
Series 3000 Width 30mm	300I	24DC	-	-	10	DIN 43650A	On Demand
	300B	24 AC	15	12	-		
	300E	230 AC	15	12	-		



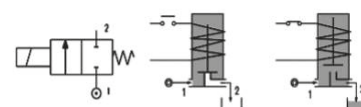
2/2 Serie R2IC Normally Closed

CODE	Connection G ISO 228	Orifice mm	Kv m3/h	Differential Pressure (bar)			Coil		Seal	Temp. Range °C
				Min	Max		Series	Width (mm)		
					AC	DC				
R2ICCBG#15/// Bob.	1/4"	1.5	0.07	0	80	80	3600	36	NBR=B	-10 +90
R2ICCBG#20/// Bob.		2	0.1	0	50	40				
R2ICCBG#25/// Bob.		2.5	0.15	0	35	32				
R2ICCBG#35/// Bob.		3.5	0.32	0	20	19				
R2ICCBG#45/// Bob.		4.5	0.41	0	14	13				
R2ICCBG#52/// Bob.		5.2	0.47	0	10	9				
R2ICCCG#30/// Bob.	3/8"	3	0.25	0	25	24	3600	36	EPDM=E	-10 +160
R2ICCCG#35/// Bob.		3.5	0.32	0	20	19				
R2ICCCG#45/// Bob.		4.5	0.41	0	14	13				
R2ICCCG#52/// Bob.		5.2	0.47	0	10	9				
R2ICCDG#30/// Bob.	1/2"	3	0.25	0	25	24	3600	36	PTFE = P	-40 +180
R2ICCDG#35/// Bob.		3.5	0.32	0	20	19				
R2ICCDG#45/// Bob.		4.5	0.41	0	14	13				
R2ICCDG#52/// Bob.		5.2	0.47	0	10	9				

: Please select the sealing type required
Example: R2ICCBG25///360I: ISO G1/4"NBR
Coil 24V DC 24W

REMARK: The maximum allowable pressure PS for steam is 6bar with PTFE seals and 2.5bar with EPDM

Note: For Industrial Oxygen use application use FKM seals and max pressure is limited to 25bar.
Example: R2ICCBGV35/O/360I G1/4" 3.5mm FKM
24V DC 24W



DESCRIPTION

- Solenoid valve 2 ways, direct acting type.
- Stainless Steel AISI 303.
- Switching-On time 18ms.
- Switching-Off time 23ms.

CONSTRUCTION

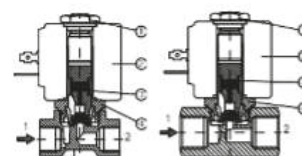
- Body: Stainless Steel AISI 303
- Armature tube: Stainless steel Aisi 303
- Plunger and core: Stainless steel 430Fr
- Springs: Stainless steel Aisi 302
- Seal material: NBR - FPM - EPDM - PTFE

FEATURES

- Maximum allowable pressure: 100bar*
- Maximum fluid viscosity: 27cSt (mm2/s)
- Ambient temperature:
with class F coil -10°C +55°C
with class H coil -10°C +80°C
- Above 80°C please consult our tech department for the application fine tuning
- Universal mounting position

OPTIONS

- Manual override
- Degreased for Industrial Oxygen use
- /B: Back pressure resistant (for more details ask our tech. dept.)
- Others on request

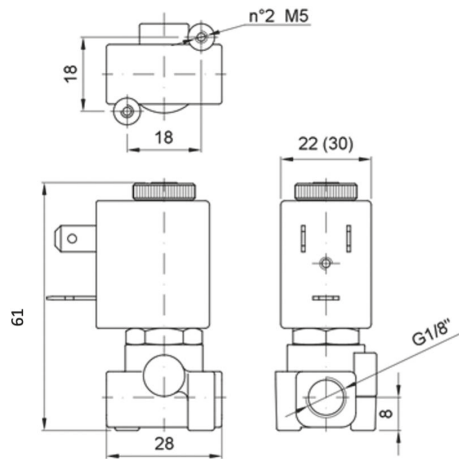


SPARE PARTS

1. Coil fixing nut
2. Coil
3. Mobile plunger assembly
4. Armature tube kit

Coils

SERIE	Product Serie	Voltage	Nominal Power			Electrical connection	Connectors
			AC VA Inrush	AC VA Holding	DC Watt		
Series 3600 Width 36mm	360I	24DC	-	-	24	DIN 43650A	On Demand
	360B	24 AC	30	24	-		
	360E	230 AC	30	24	-		



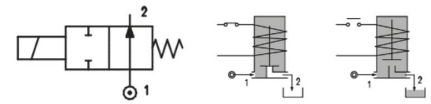
2/2 Serie R2AB Normally Open

CODE	Connection	Orifice	Kv	Differential Pressure (bar)			Coil		Seal	Temp. Range
				Min	Max		Series	Width (mm)		
					AC	DC				
R2ABAAG#12/// Coil	G ISO 228 1/8"	1.2	0.04	0	18	18	2200	22	NBR=B	-10 +90
R2ABAAG#15/// Coil		1.5	0.06	0	14	14				
R2ABAAG#20/// Coil		2.0	0.09	0	8	8			EPDM=E	-10 +160
R2ABAAG#25/// Coil		2.5	0.15	0	4	4				
R2ABAAG#30/// Coil		3.0	0.20	0	2.5	2.5				

: Please select the sealing type required
 Example: R2ABAAGB25///280I: ISO G1/8"NBR
 Coil 24V DC 7W

Coils

SERIE	Coil P/N	Voltage	Nominal Power			Electrical connection	Connectors
			AC VA Inrush	AC VA Holding	DC Watt		
Series 2800 Width 22mm	2801	24 DC	-	-	7	Industrial Standard 22 mm	On Demand
	280B	24 AC	11,5	9	-		
	280D	110 AC	11,5	9	-		
	280E	230 AC	11,5	9	-		



DESCRIPTION

- Solenoid valve 2 ways, direct acting type.
- Brass body CW617N.
- Switching-On time 25ms.
- Switching-Off time 10ms.

CONSTRUCTION

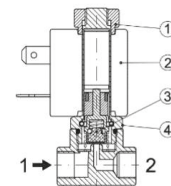
- Body: Brass CW617N
- Armature tube: Brass CW614N
- Plunger and core: Stainless steel - 430Fr
- Springs: Stainless steel - Aisi 302
- Seal material: NBR - FPM - EPDM

FEATURES

- Maximum allowable pressure: 45bar*
- Maximum fluid viscosity: 25cSt (mm2/s)
- Ambient temperature:
 Class F coil -10°C +55°C
 Class H coil -10°C +80°C
- Above 80°C please consult our tech department for the application fine tuning
- Universal mounting

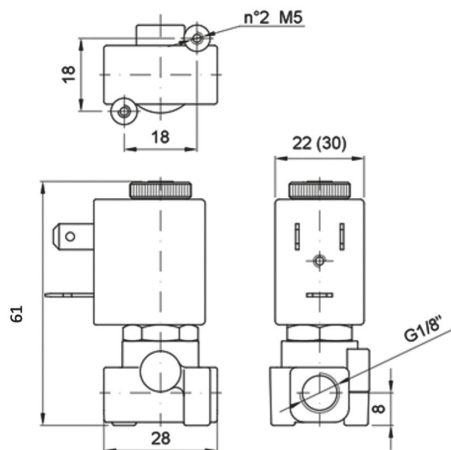
OPTIONS

- Electroless nickel plating
- Others on request



SPARE PARTS

1. Coil fixing nut
2. Coil
3. Mobile plunger assembly
4. Armature tube kit



2/2 Serie R2AC Normally Open

CODE	Connection G ISO 228	Orifice mm	Kv m3/h	Differential Pressure (bar)			Coil		Seal	Temp. Range °C
				Min	Max		Series	Width (mm)		
					AC	DC				
R2ACAAG#15/// Coil	1/8"	1.5	0.07	0	24	24	3000	30	NBR=B	-10 +90
R2ACAAG#20/// Coil		2	0.1	0	18	18				
R2ACAAG#25/// Coil		2.5	0.15	0	12	12				
R2ACAAG#30/// Coil		3.0	0.25	0	9	9				
R2ACAAG#35/// Coil		3.5	0.32	0	7	7				
R2ACABG#15/// Coil	1/4"	1.5	0.07	0	24	24	3000	30	EPDM=E	-10 +160
R2ACABG#20/// Coil		2	0.1	0	18	18				
R2ACABG#25/// Coil		2.5	0.15	0	12	12				
R2ACABG#30/// Coil		3.0	0.25	0	9	9				
R2ACABG#35/// Coil		3.5	0.32	0	7	7				
R2ACABG#45/// Coil	4.5	0.41	0	5	5	3000	30	FPM=V	-10 +160	
R2ACABG#52/// Coil	5.2	0.47	0	4	4					
R2ACACG#30/// Coil	3	0.25	0	9	9					
R2ACACG#35/// Coil	3.5	0.32	0	7	7					
R2ACACG#45/// Coil	4.5	0.41	0	5	5					
R2ACACG#52/// Coil	5.2	0.47	0	4	4	3000	30	FPM=V	-10 +160	
R2ACADG#30/// Coil	3	0.25	0	9	9					
R2ACADG#35/// Coil	3.5	0.32	0	7	7					
R2ACADG#45/// Coil	4.5	0.41	0	5	5					
R2ACADG#52/// Coil	5.2	0.47	0	4	4					

: Please select the sealing type required

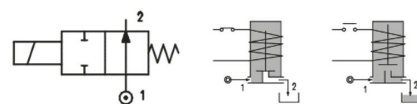
Example: R2ACABG25///3001: ISO G1/4"NBR

Coil 24V DC 10W

*REMARK: The maximum allowable pressure PS for steam is 6bar with PTFE seals and 2,5bar with EPDM seals

Coils

SERIE	Coil P/N	Voltage	Nominal Power			Electrical connection	Connectors
			AC VA Inrush	AC VA Holding	DC Watt		
Series 3000 Width 30mm	3001	24DC	-	-	10	DIN 43650A	On Demand
	300B	24 AC	15	12	-		
	300D	110 AC	15	12	-		
	300E	230 AC	15	12	-		



DESCRIPTION

- Solenoid valve 2 ways, direct acting type.
- Brass body CW617N.
- Switching-On time 25ms.
- Switching-Off time 10ms.

CONSTRUCTION

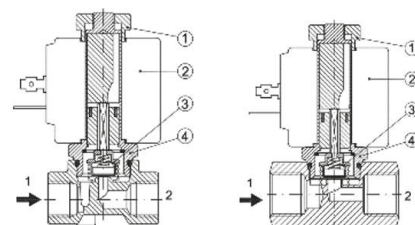
- Body: Brass CW614N
- Armature tube: Stainless steel Aisi 303
- Plunger and core: Stainless steel 430Fr
- Springs: Stainless steel Aisi 302
- Seal material: NBR - FPM - EPDM

FEATURES

- Maximum allowable pressure: 100bar*
- Maximum fluid viscosity: 27cSt (mm2/s)
- Ambient temperature:
 - with class F coil -10°C +55°C
 - with class H coil -10°C +80°C
- Above 80°C please consult our tech department for the application fine tuning
- Universal mounting position

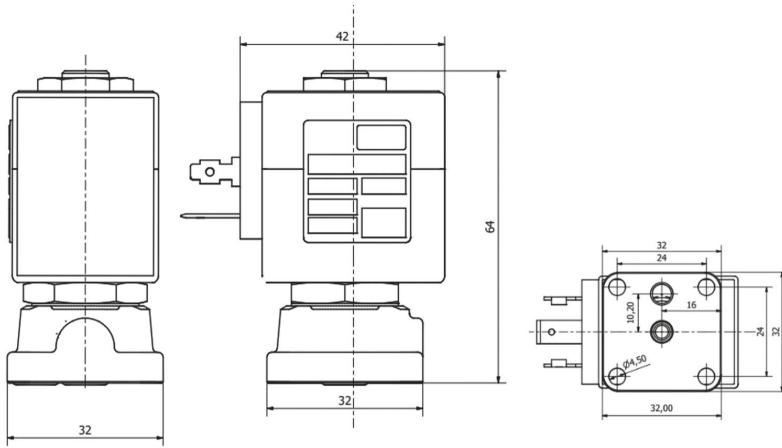
OPTIONS

- Electroless nickel plating
- Others on request



SPARE PARTS

1. Coil fixing nut
2. Coil
3. Mobile plunger assembly
4. Armature tube kit



2/2 Serie R2XC Normally Open

CODE	Connection G ISO 228	Orifice mm	Kv m³/h	Differential Pressure (bar)			Coil		Seal	Temp. Range °C
				Min	Max AC DC		Series	Width (mm)		
R2XCAXG#15/// Bob.	A Basetta	1.5	0.07	0	24	24	3000	30	NBR=B	-10 +90
R2XCAXG#20/// Bob.		2	0.1	0	18	18			EPDM=E	-10 +160
R2XCAXG#25/// Coil		2.5	0.15	0	12	12			FPM=V	-10 +160

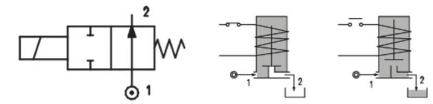
: Please select the sealing type required

Example: R2XCAXGB25///3001: ISO G¾"NBR
Coil 24V DC 10W

*REMARK: The maximum allowable pressure PS for steam is 6bar with PTFE seals and 2,5bar with EPDM seals

Coils

SERIE	Coil P/N	Voltage	Nominal Power			Electrical connection	Connectors
			AC VA Inrush	AC VA Holding	DC Watt		
Series 3000 Width 30mm	3001	24DC	-	-	10	DIN 43650A	On Demand
	300B	24 AC	15	12	-		
	300E	230 AC	15	12	-		



DESCRIPTION

- Solenoid valve 2 ways, direct acting type.
- Brass body CW617N.
- Switching-On time 25ms.
- Switching-Off time 10ms.

CONSTRUCTION

- Body: Brass CW614N
- Armature tube: Stainless steel Aisi 303
- Plunger and core: Stainless steel 430F8
- Springs: Stainless steel Aisi 302
- Seal material: NBR - FPM - EPDM

FEATURES

- Maximum allowable pressure: 100bar*
- Maximum fluid viscosity: 27cSt (mm2/s)
- Ambient temperature:
with class F coil -10°C +55°C
with class H coil -10°C +80°C
- Above 80°C please consult our tech department for the application fine tuning
- Universal mounting position

OPTIONS

- Electroless nickel plating
- Others on request

SPARE PARTS

1. Coil fixing nut
2. Coil
3. Mobile plunger assembly
4. Armature tube kit