

Serie R2PF Normally Close

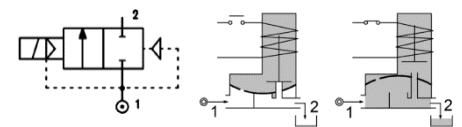
CODE	Connection G ISO 228	Orifice mm	Kv m³/h	Differential Pressure (bar)			Coil		Seal	Temp. Range °C				
				Min	Max	Series	Width (mm)							
Threaded GAS Female Version														
R2PFCBGE09/// Coil	1/4"	9	0.48	0.2	10	10	2500	25	EPDM=E	-10 +90 (*)				
R2PFCDEGE09/// Coil	1/2"	9	0.48	0.2	10	10								
Threaded GAS Male Version														
R2PFCDEME09/// Coil	1/2"	9	0.48	0.2	10	10								
Push IN Version														
R2PFCTPE09/// Coil	6mm	9	0.48	0.2	10	10								
R2PFCUPE09/// Coil	8mm	9	0.48	0.2	10	10								
R2PFCVPE09/// Coil	10mm	9	0.48	0.2	7	7								

: Please select the sealing type required
 Example: R2PFCDEME09///250B: ISO G1/2"NBR
 Coil 24V AC 6,5W

Coils

SERIE	Coil P/N	Voltage	Nominal Power			Electrical connection	Connectors
			AC VA Inrush	AC VA Holding	DC Watt		
Serie 250x Width 25mm	2501	24V DC	-	-	8	In line Faston	n/d
	250B	24V AC	8	6	-		
	250E	230V AC	8	6	-		

Note: Other voltages available on request



DESCRIPTION

- Solenoid valve 2 ways, indirect acting type.
- Body PA66 + G.F.

CONSTRUCTION

- Body: PA66 + G.F.
- Armature tube: PA66
- Plunger and core: Stainless steel 430Fr
- Springs: Stainless steel Aisi 302
- Seal material: EPDM

FEATURES

- Maximum allowable pressure: 10bar
- Maximum fluid viscosity: 27cSt (mm²/s)
- Ambient temperature: with class F coil -10°C +60°C
- Fluid temperature - coil ED: (*) Up to 25°C: ED100%
At 90°C - TONmax 3min - TOFF 5min
- Preferred mounting position with vertical coil above

OPTIONS