



AUTOMATION

CILINDRI CARTUCCIA  
CARTRIDGE CYLINDERS

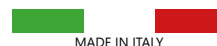
SERIE

TA



MADE IN ITALY

**CILINDRI CARTUCCIA Ø06 - Ø16**  
**CARTRIDGE CYLINDERS Ø06 - Ø16**



**VERSIONI - VERSIONS**



**Materiali - Materials**

Corpo - Body	Ottone nichelato Nickel coated brass
Stelo - Piston rod	Acciaio inox AISI303 Stainless steel AISI303
Guarnizioni - Seals	Poliuretano Polyurethane

**Informazioni tecniche - Technical features**

Fluido - Fluid	Aria compressa filtrata lubrificata e non Filtered and lubricated or not compressed air
Temp. impiego Working Temp.	Ø6 -20°C +80°C con aria secca / w dry air Ø10-16 -35°C +80°C con aria secca / w dry air
Pressione MIN/MAX MIN/MAX pressure	2bar / 10 bar

**CHIAVE DI CODIFICA - KEY CODE**

Base		Versioni - Versions						Ø	Corsa - Stroke	
TA	SA	Semplice effetto molla anteriore	0	Standard	T	Stelo filettato	N	Guarnizioni standard	Ø06	0005
		Single acting front spring				Threaded piston rod		Standard seals		
					N	Stelo non filettato	H	Guarnizioni Viton	...	...
						Not threaded piston rod		Viton seals	Ø16	0015

**CODICE ESEMPIO - SAMPLE CODE**

TA	SA	0	T	N	010	0010	+	varianti	variants
----	----	---	---	---	-----	------	---	----------	----------

**VARIANTI - VARIANTS**

Filetto stelo speciale Special piston rod thread	Prolunga stelo Extended piston rod
Su richiesta	PXXX
On request	

**CORSE STANDARD - STANDARD STROKES**

Ø	5	10	15
6	°	°	°
10	°	°	°
16	°	°	°

° = Cilindro semplice effetto - Single acting cylinder

**FORZE TEORICHE - THEORETICAL FORCES**

Forze teoriche molle - Theoretical spring forces (N)						
Molla anteriore - Front spring						
Corsa - Stroke						
Ø	5		10		15	
	F1	F2	F1	F2	F1	F2
06	1,6	3,7	1,6	3,9	1,6	3,9
10	7,4	11,5	6	12,5	6,8	12,8
16	8,4	9,5	8,4	10,7	7,4	10,7

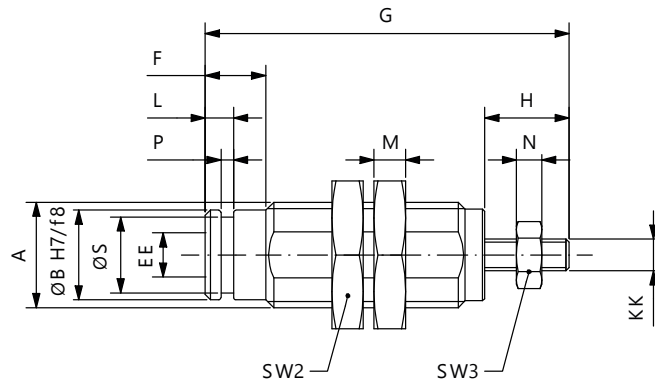
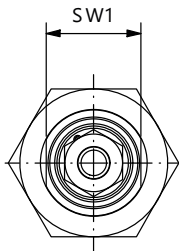
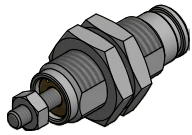
Forze teoriche a 6 bar	
Theoretical forces at 6 bar	
Ø	Forza di spinta (N)
	Thrust force (N)
06	17
10	47
16	121

**CILINDRI CARTUCCIA Ø06 - Ø16**  
**CARTRIDGE CYLINDERS Ø06 - Ø16**



**SEMPLICE EFFETTO MOLLA ANTERIORE - SINGLE ACTING FRONT SPRING**

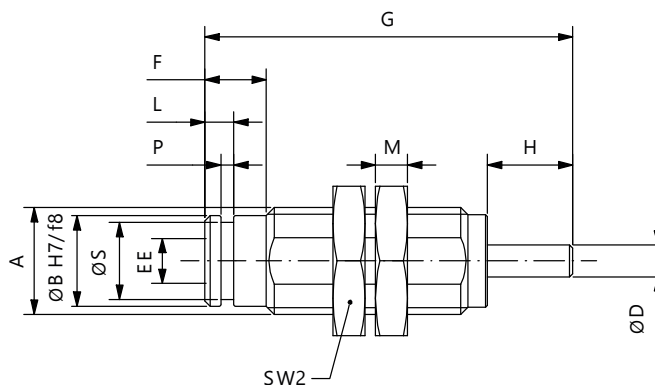
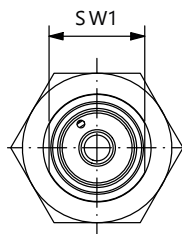
**TASA0TN - TASA0TH STELO FILETTATO - THREADED PISTON ROD**



Ø	A	ØB	ØS	P	L	EE	KK	SW1	F	G 05	G 10	G 15	H	M	SW2	N	SW3
6	M10X1	8,5	7,2	1,2	2,7	M5	M3	9	5	27,5	34,5	41,5	8	3	14	2,4	5,5
10	M15X1,5	12	9,8	2	3,5	M5	M4	14	7	33,5	40	47	10,5	4	19	3,2	7
16	M22X1,5	19	16,8	2	4	M5	M5	20	6	40	45	50	13	5	27	4	8

**SEMPLICE EFFETTO MOLLA ANTERIORE - SINGLE ACTING FRONT SPRING**

**TASA0NN - TASA0NH STELO NON FILETTATO - NOT THREADED PISTON ROD**



Ø	A	ØB	ØS	P	L	EE	KK	SW1	F	G 05	G 10	G 15	H	M	SW2
6	M10X1	8,5	7,2	1,2	2,7	M5	3	9	5	27,5	34,5	41,5	8	3	14
10	M15X1,5	12	9,8	2	3,5	M5	5	14	7	33,5	40	47	10,5	4	19
16	M22X1,5	19	16,8	2	4	M5	5	20	6	40	45	50	13	5	27