



AUTOMATION

**CILINDRI COMPATTI UNITOP  
UNITOP COMPACT CYLINDERS**

SERIE

**UA**

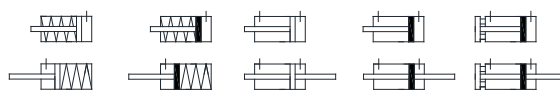


MADE IN ITALY

**CILINDRI COMPATTI UNITOP Ø12 - Ø100**  
**ISO21287 COMPACT CYLINDERS Ø12 - Ø100**



**VERSIONI - VERSIONS**



Materiali - Materials	
Testate - Covers	Alluminio pressofuso verniciato Painted die-casted aluminum
Tubo - Tube	Alluminio anodizzato Anodized aluminum
Stelo - Piston rod	Acciaio inox AISI303 Stainless steel AISI303
Pistone - Piston	Alluminio Aluminum
Guarnizioni - Seals	PU / NBR
Boccola guida - Guiding bush	Bronzo sinterizzato Sintered bronze

Informazioni tecniche - Technical features	
Fluido - Fluid	Aria compressa filtrata lubrificata e non Filtered and lubricated or not compressed air
Temp. impiego Working Temp.	-35°C +80°C con aria secca / w dry air
Pressione MAX MAX pressure	10 bar

**CHIAVE DI CODIFICA - KEY CODE**

Base		Versioni - Versions						Ø	Corsa - Stroke	
UA	SA	Semplice effetto molla anteriore	0	Standard	M	Magnetico	M	Filetto stelo maschio	012	0005
		Single acting front spring		Standard		Magnetic		Male piston rod thread		
	SP	Semplice effetto molla posteriore	1	Passante	N	Non magnetico	F	Filetto stelo femmina	...	...
		Single acting rear spring		Through rod		Not magnetic		Female piston rod thread		
	DE	Doppio effetto							100	500
		Double acting								

**CODICE ESEMPIO - SAMPLE CODE**

UA	DE	0	M	M	050	0100	+	varianti	variants
----	----	---	---	---	-----	------	---	----------	----------

**VARIANTI - VARIANTS**

	Guarnizioni Seals	Versione Version	Materiale stelo Piston rod material	Filetto stelo speciale Special piston rod thread	Prolunga stelo Extended piston rod	Atex
HR	Guarnizione stelo Viton	E	Antirotaazione	Su richiesta	PXXX	xxx = mm
	Viton Rod seal		Not rotating	On request		
HA	Tutto Viton					
	All Viton					

**CORSE STANDARD - STANDARD STROKES**

Ø	5	10	15	20	25	30	40	50	60	70	80	90	100	125	160	200	250
12	XY	XY	XY	XY	XY	XY	XY	XY	Y	Y	Y	Y	Y				
16	XY	XY	XY	XY	XY	XY	XY	XY	Y	Y	Y	Y	Y	Y			
20	XY	XY	XY	XY	XY	XY	XY	XY	Y	Y	Y	Y	Y	Y	Y		
25	XY	XY	XY	XY	XY	XY	XY	XY	Y	Y	Y	Y	Y	Y	Y		
32	XY	XY	XY	XY	XY	XY	XY	XY	Y	Y	Y	Y	Y	Y	Y	Y	
40	XY	XY	XY	XY	XY	XY	XY	XY	Y	Y	Y	Y	Y	Y	Y	Y	
50	XY	XY	XY	XY	XY	XY	XY	XY	Y	Y	Y	Y	Y	Y	Y	Y	Y
63	XY	XY	XY	XY	XY	XY	XY	XY	Y	Y	Y	Y	Y	Y	Y	Y	Y
80	XY	XY	XY	XY	XY	XY	XY	XY	Y	Y	Y	Y	Y	Y	Y	Y	Y
100	XY	XY	XY	XY	XY	XY	XY	XY	Y	Y	Y	Y	Y	Y	Y	Y	Y

X= Cilindro semplice effetto - Single acting cylinder

Y= Cilindro doppio effetto - Double acting cylinder

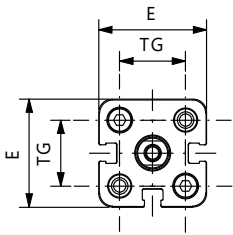
**FORZE TEORICHE - THEORETICAL FORCES**

Forze teoriche a 6 bar - Theoretical forces at 6 bar

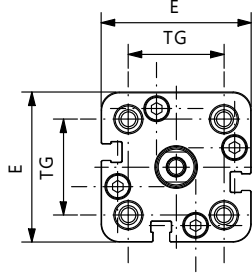
Ø	Forza di spinta (N) Thrust force (N)	Forza in trazione (N) Traction force (N)
12	67	50
16	121	91
20	188	142
25	295	248
32	482	415
40	754	687
50	1178	1058
63	1869	1750
80	3014	2829
100	4710	4420

**SEMPLICE EFFETTO MOLLA ANTERIORE - SINGLE ACTING FRONT SPRING**

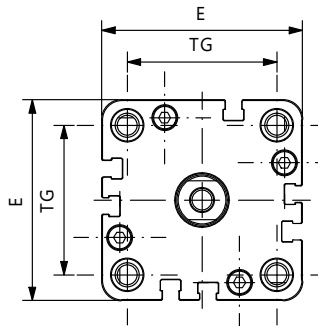
**UASA0N(M/F) - UASA0M(M/F)**



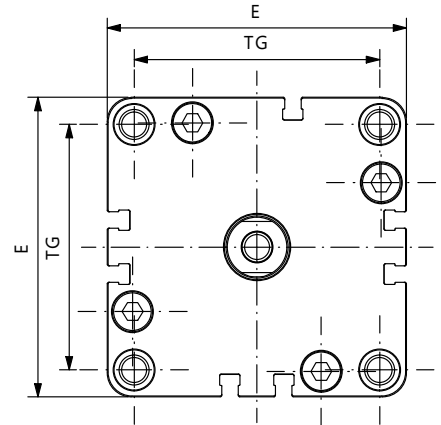
Ø012 - Ø016 - Ø020 - Ø025



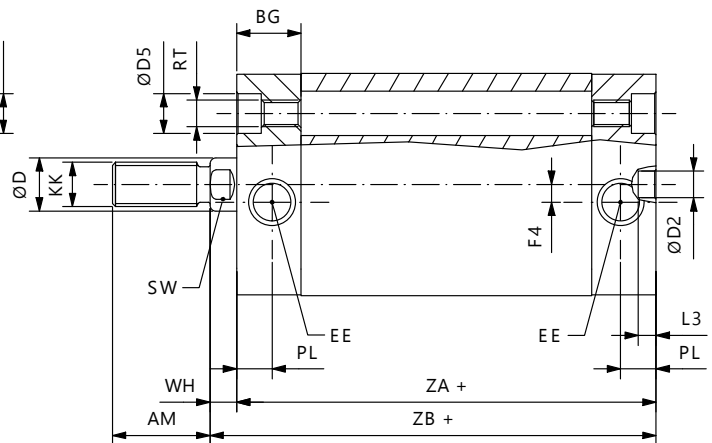
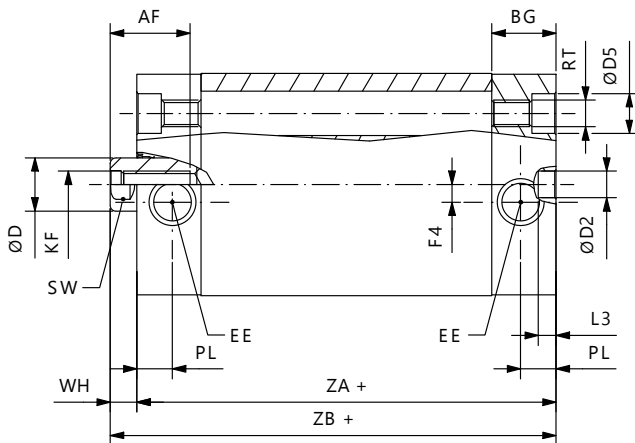
Ø032 - Ø040



Ø050



Ø063 - Ø080 - Ø100

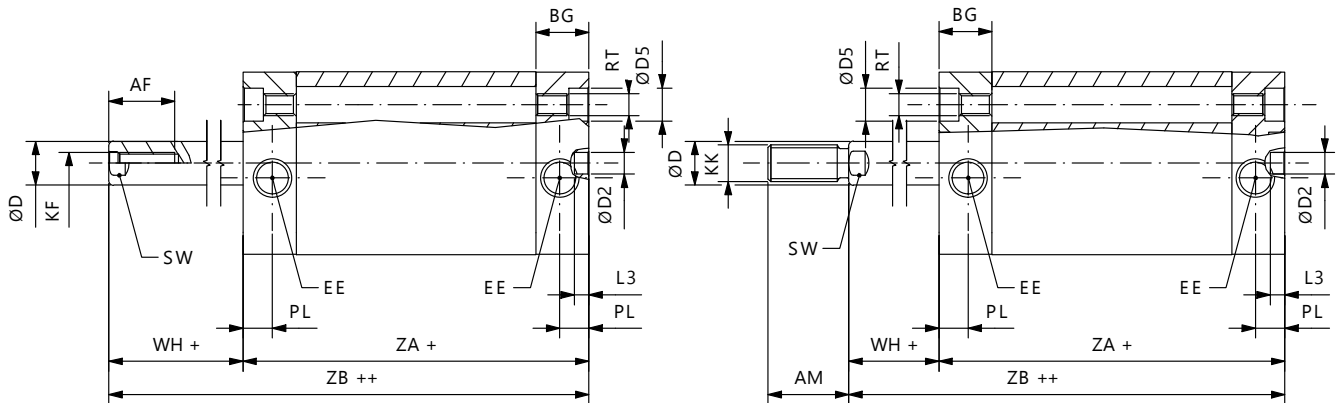
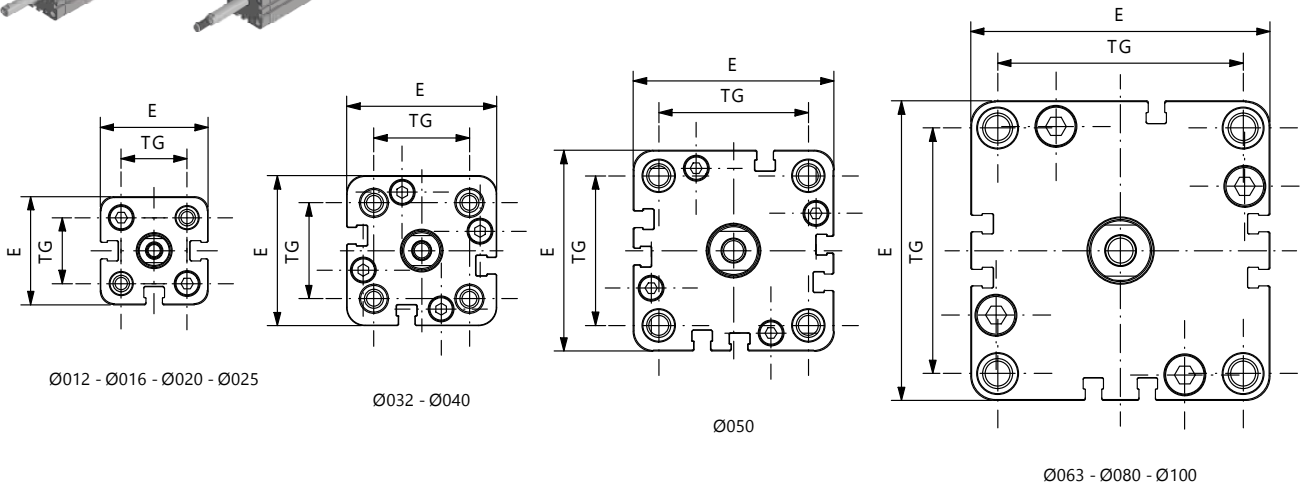


Ø	E	ØD2	RT	ØD5	KF	ØD	EE	PL	BG	TG	SW	L3	AF	WH	ZA	AM	KK	ZB	F4
12	29	6	M4	6	M3	6	M5	8	12,25	18	5	4	8	4,5	38	16	M6x1	42,5	-
16	29	6	M4	6	M4	8	M5	8	12,25	18	6	4	11	4,5	38	20	M8x1	42,5	-
20	36	6	M5	7,5	M5	10	M5	8	12,25	22	8	4	12	4,5	38	22	M10x1,25	42,5	-
25	40	6	M5	7,5	M5	10	M5	8	12,75	26	8	4	12	5,5	39,5	22	M10x1,25	45	-
32	50	6	M6	9	M6	12	1/8 G	8	14,5	32	10	4	15	6	44,5	22	M10x1,25	50,5	4
40	58	6	M6	9	M6	12	1/8 G	8	14,75	42	10	4	15	6,5	45,5	22	M10x1,25	51	3
50	67	6	M8	10,5	M8	16	1/8 G	8	14,75	50	13	4	17	7,5	45,5	24	M12x1,25	53	-
63	80	8	M10	13,5	M8	16	1/8 G	8	14,25	62	13	4	17	7,5	50	24	M12x1,25	57,5	-
80	100	8	M10	13,5	M10	20	1/8 G	8,5	16	82	17	4	17	8	56	32	M16x1,5	64	-
100	124	8	M10	13,5	M12	25	1/4 G	10,5	19,25	103	22	4	22	10	66,5	40	M20x1,5	76,5	-

+ = sommare corsa / plus stroke length

**SEMPLICE EFFETTO MOLLA POSTERIORE - SINGLE ACTING REAR SPRING**

**UASPON(M/F) - UASPOM(M/F)**



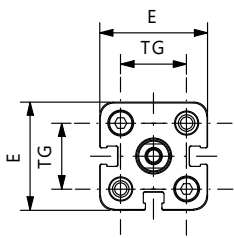
Ø	E	ØD2	RT	ØD5	KF	ØD	EE	PL	BG	TG	SW	L3	AF	WH	ZA	AM	KK	ZB	F4
12	29	6	M4	6	M3	6	M5	8	12,25	18	5	4	8	4,5	38	16	M6x1	42,5	-
16	29	6	M4	6	M4	8	M5	8	12,25	18	6	4	11	4,5	38	20	M8x1	42,5	-
20	36	6	M5	7,5	M5	10	M5	8	12,25	22	8	4	12	4,5	38	22	M10x1,25	42,5	-
25	40	6	M5	7,5	M5	10	M5	8	12,75	26	8	4	12	5,5	39,5	22	M10x1,25	45	-
32	50	6	M6	9	M6	12	1/8 G	8	14,5	32	10	4	15	6	44,5	22	M10x1,25	50,5	4
40	58	6	M6	9	M6	12	1/8 G	8	14,75	42	10	4	15	6,5	45,5	22	M10x1,25	51	3
50	67	6	M8	10,5	M8	16	1/8 G	8	14,75	50	13	4	17	7,5	45,5	24	M12x1,25	53	-
63	80	8	M10	13,5	M8	16	1/8 G	8	14,25	62	13	4	17	7,5	50	24	M12x1,25	57,5	-
80	100	8	M10	13,5	M10	20	1/8 G	8,5	16	82	17	4	17	8	56	32	M16x1,5	64	-
100	124	8	M10	13,5	M12	25	1/4 G	10,5	19,25	103	22	4	22	10	66,5	40	M20x1,5	76,5	-

+ = sommare corsa / plus stroke length

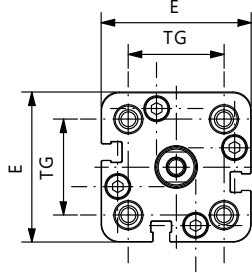
++ = sommare 2 x corsa / plus stroke length x 2

**DOPPIO EFFETTO - DOUBLE ACTING**

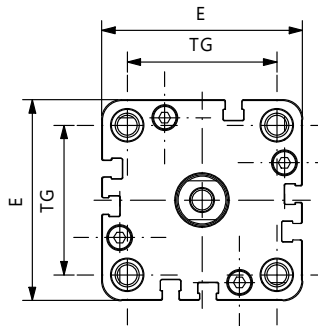
**UADE0N(M/F) - UADE0M(M/F)**



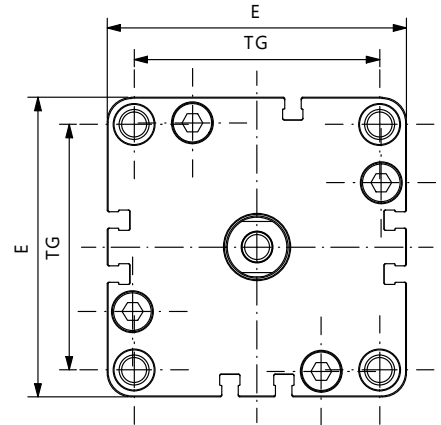
Ø12 - Ø16 - Ø20 - Ø25



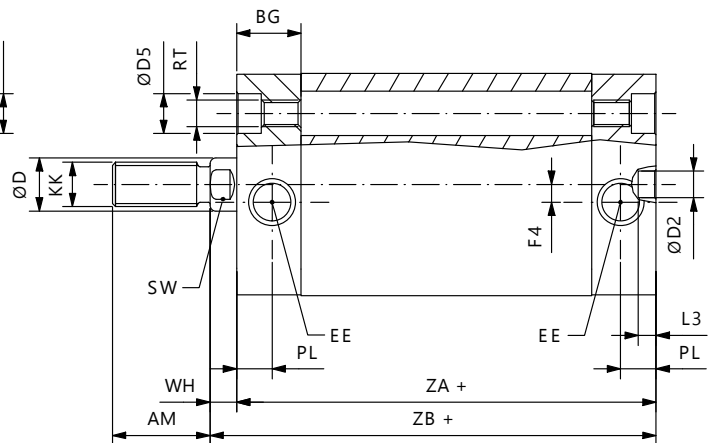
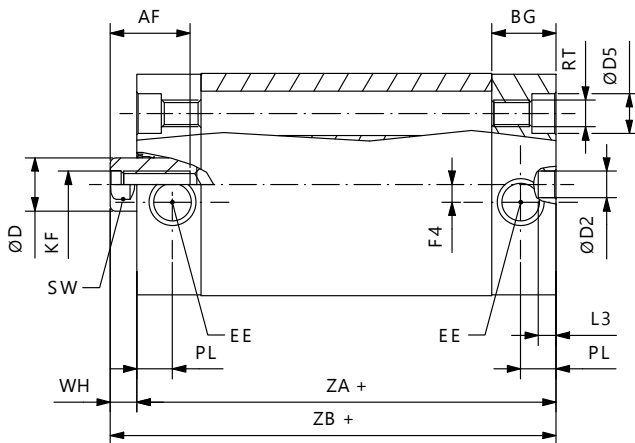
Ø32 - Ø40



Ø50



Ø63 - Ø80 - Ø100

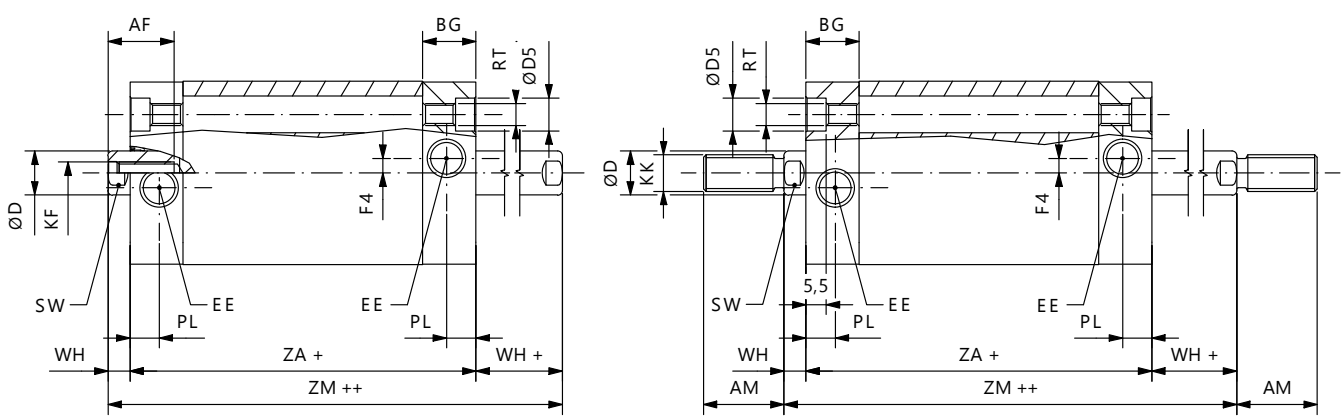
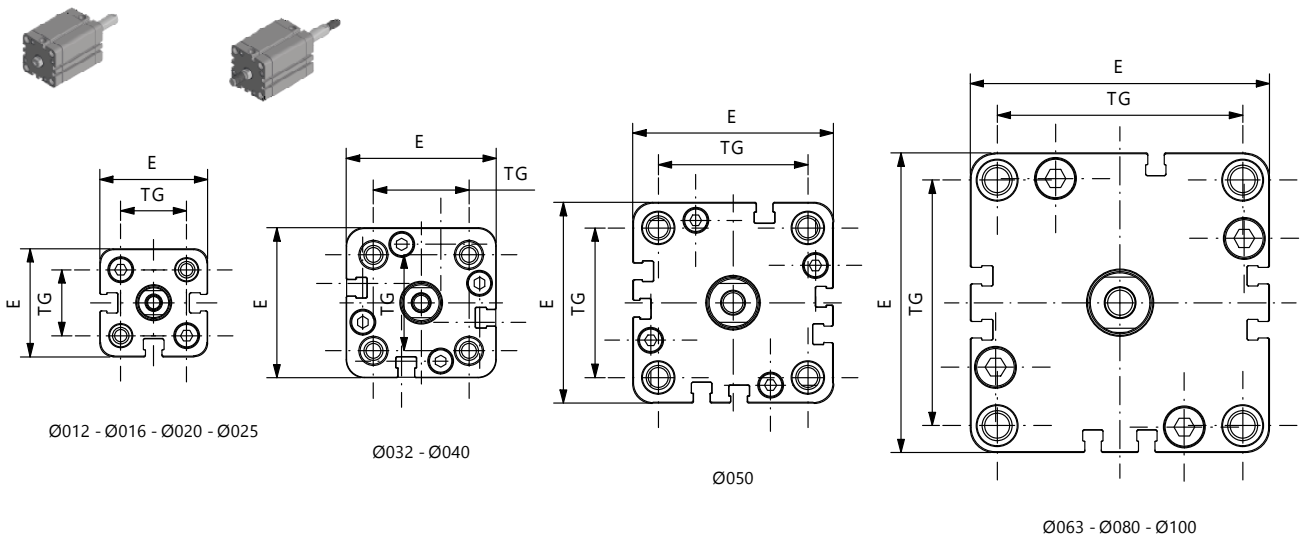


Ø	E	ØD2	RT	ØD5	KF	ØD	EE	PL	BG	TG	SW	L3	AF	WH	ZA	AM	KK	ZB	F4
12	29	6	M4	6	M3	6	M5	8	12,25	18	5	4	8	4,5	38	16	M6x1	42,5	-
16	29	6	M4	6	M4	8	M5	8	12,25	18	6	4	11	4,5	38	20	M8x1	42,5	-
20	36	6	M5	7,5	M5	10	M5	8	12,25	22	8	4	12	4,5	38	22	M10x1,25	42,5	-
25	40	6	M5	7,5	M5	10	M5	8	12,75	26	8	4	12	5,5	39,5	22	M10x1,25	45	-
32	50	6	M6	9	M6	12	1/8 G	8	14,5	32	10	4	15	6	44,5	22	M10x1,25	50,5	4
40	58	6	M6	9	M6	12	1/8 G	8	14,75	42	10	4	15	6,5	45,5	22	M10x1,25	51	3
50	67	6	M8	10,5	M8	16	1/8 G	8	14,75	50	13	4	17	7,5	45,5	24	M12x1,25	53	-
63	80	8	M10	13,5	M8	16	1/8 G	8	14,25	62	13	4	17	7,5	50	24	M12x1,25	57,5	-
80	100	8	M10	13,5	M10	20	1/8 G	8,5	16	82	17	4	17	8	56	32	M16x1,5	64	-
100	124	8	M10	13,5	M12	25	1/4 G	10,5	19,25	103	22	4	22	10	66,5	40	M20x1,5	76,5	-

+ = sommare corsa / plus stroke length

**DOPPIO EFFETTO PASSANTE - DOUBLE ACTING THROUGH ROD**

**UADE1N(M/F) - UADE1M(M/F)**

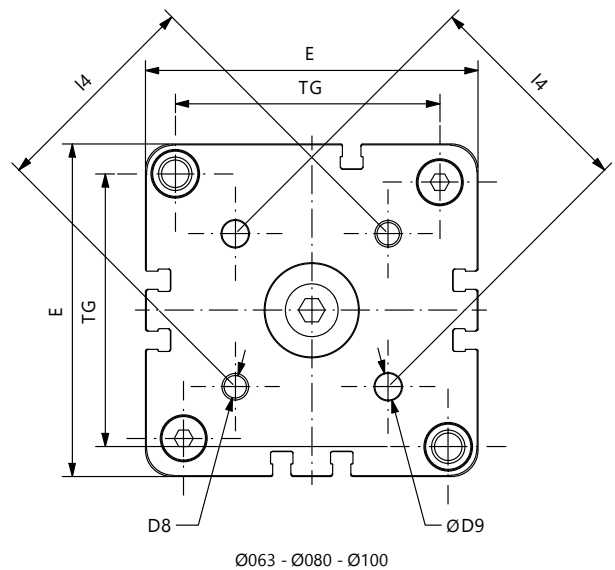
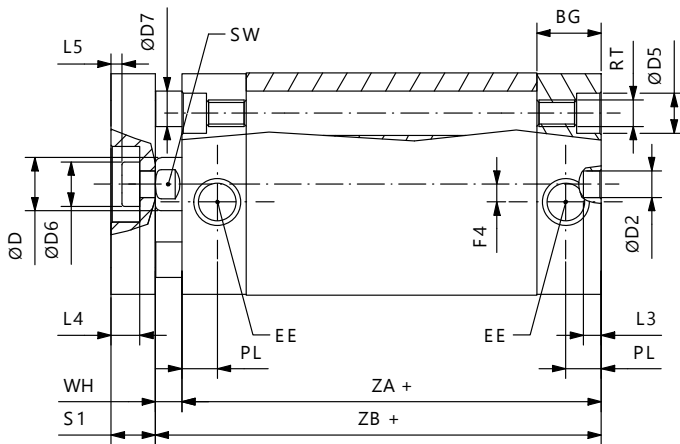
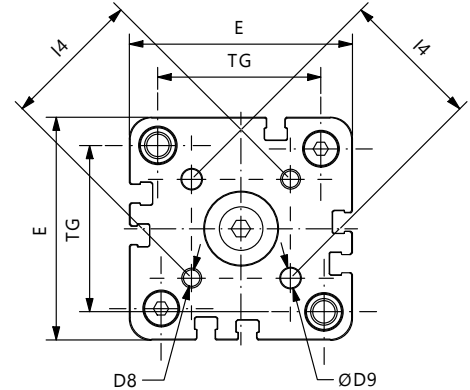
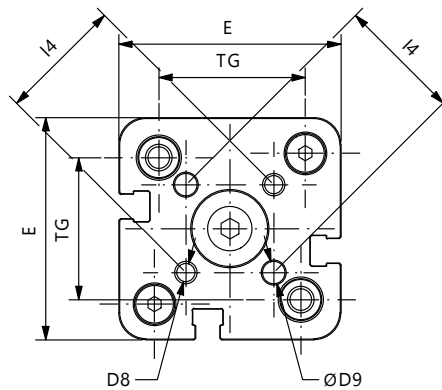
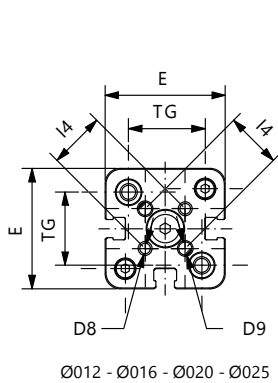


Ø	E	ØD2	RT	ØD5	KF	ØD	EE	PL	BG	TG	SW	L3	AF	WH	ZA	AM	KK	ZM	F4
12	29	6	M4	6	M3	6	M5	8	12,25	18	5	4	8	4,5	38	16	M6x1	47	-
16	29	6	M4	6	M4	8	M5	8	12,25	18	6	4	11	4,5	38	20	M8x1	47	-
20	36	6	M5	7,5	M5	10	M5	8	12,25	22	8	4	12	4,5	38	22	M10x1,25	47	-
25	40	6	M5	7,5	M5	10	M5	8	12,75	26	8	4	12	5,5	39,5	22	M10x1,25	50,5	-
32	50	6	M6	9	M6	12	1/8 G	8	14,5	32	10	4	15	6	44,5	22	M10x1,25	56,5	4
40	58	6	M6	9	M6	12	1/8 G	8	14,75	42	10	4	15	6,5	45,5	22	M10x1,25	58,5	3
50	67	6	M8	10,5	M8	16	1/8 G	8	14,75	50	13	4	17	7,5	45,5	24	M12x1,25	60,5	-
63	80	8	M10	13,5	M8	16	1/8 G	8	14,25	62	13	4	17	7,5	50	24	M12x1,25	65	-
80	100	8	M10	13,5	M10	20	1/8 G	8,5	16	82	17	4	17	8	56	32	M16x1,5	72	-
100	124	8	M10	13,5	M12	25	1/4 G	10,5	19,25	103	22	4	22	10	66,5	40	M20x1,5	86,5	-

+ = sommare corsa / plus stroke length  
 ++ = sommare 2 x corsa / plus stroke length x 2

**DOPPIO EFFETTO ANTIROTAZIONE - DOUBLE ACTING NOT ROTATING**

**UADE0NF...E - UADE0MF...E**



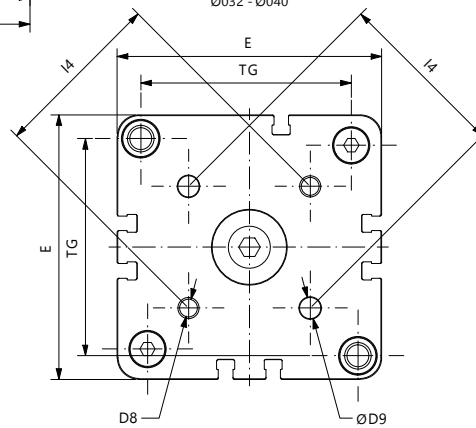
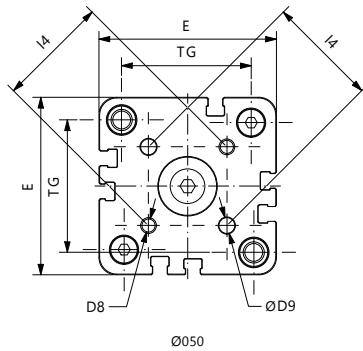
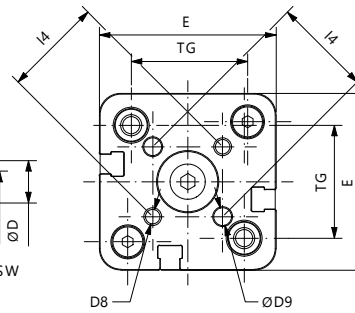
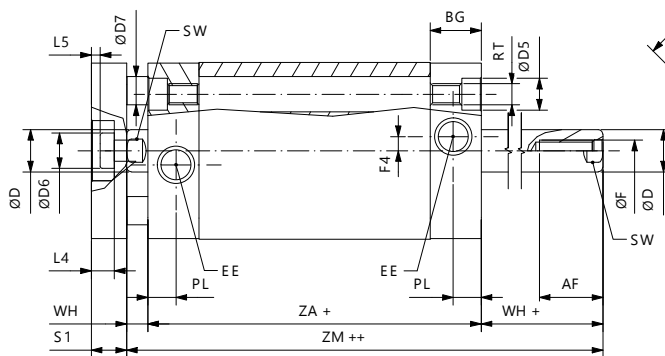
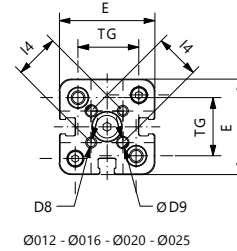
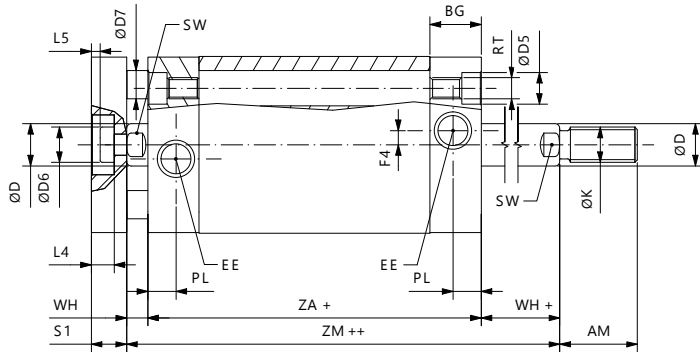
Ø	E	ØD2	RT	ØD5	KF	ØD6	EE	PL	BG	TG	SW	L3	AF	WH	ZA	ZB	F4	I4	L4	L5	S1	ØD7	ØD	ØD8	ØD9
16	29	6	M4	6	M4	8	M5	8	12,25	18	6	4	8	4,5	38	42,5	-	14	3,8	1	6	5	9	M3	3
20	36	6	M5	7,5	M5	10	M5	8	12,25	22	8	4	10	4,5	38	42,5	-	17	5	1,5	8	5	11	M4	4
25	40	6	M5	7,5	M5	10	M5	8	12,75	26	8	4	10	5,5	39,5	45	-	22	5	1,5	8	6	14	M5	5
32	50	6	M6	9	M6	12	1/8 G	8	14,5	32	10	4	12	6	44,5	50,5	4	28	6,5	2,5	10	8	17	M5	5
40	58	6	M6	9	M6	12	1/8 G	8	14,75	42	10	4	12	6,5	45,5	52	3	33	6,5	2,5	10	10	17	M5	5
50	67	6	M8	10,5	M8	16	1/8 G	8	14,75	50	13	4	12	7,5	45,5	53	-	42	7,5	2,5	12	10	22	M6	6
63	80	8	M10	13,5	M8	16	1/8 G	8	14,25	62	13	4	14	7,5	50	57,5	-	50	7,5	2,5	12	10	22	M6	6
80	100	8	M10	13,5	M10	20	1/8 G	8,5	16	82	17	4	15	8	56	64	-	65	9	3	14	14	28	M8	8
100	124	8	M10	13,5	M12	25	1/4 G	10,5	19,25	103	22	4	20	10	66,5	76,5	-	80	10	3	14	14	30	M10	10

+ = sommare corsa / plus stroke length



**DOPPIO EFFETTO PASSANTE ANTIROTAZIONE - DOUBLE ACTING THROUGH ROD NOT ROTATING**

**UADE1N(M/F)...E - UADE1M(M/F)...E**



Ø	E	ØD2	RT	ØD5	KF	ØD6	EE	PL	BG	TG	SW	L3	AF	WH	ZA	ZM	F4	I4	L4	L5	S1	ØD7	ØD	ØD8	ØD9
16	29	6	M4	6	M4	8	M5	8	12,25	18	6	4	8	4,5	38	47	-	14	3,8	1	6	5	9	M3	3
20	36	6	M5	7,5	M5	10	M5	8	12,25	22	8	4	10	4,5	38	47	-	17	5	1,5	8	5	11	M4	4
25	40	6	M5	7,5	M5	10	M5	8	12,75	26	8	4	10	5,5	39,5	50,5	-	22	5	1,5	8	6	14	M5	5
32	50	6	M6	9	M6	12	1/8 G	8	14,5	32	10	4	12	6	44,5	56,5	4	28	6,5	2,5	10	8	17	M5	5
40	58	6	M6	9	M6	12	1/8 G	8	14,75	42	10	4	12	6,5	45,5	58,5	3	33	6,5	2,5	10	10	17	M5	5
50	67	6	M8	10,5	M8	16	1/8 G	8	14,75	50	13	4	12	7,5	45,5	60,5	-	42	7,5	2,5	12	10	22	M6	6
63	80	8	M10	13,5	M8	16	1/8 G	8	14,25	62	13	4	14	7,5	50	65	-	50	7,5	2,5	12	10	22	M6	6
80	100	8	M10	13,5	M10	20	1/8 G	8,5	16	82	17	4	15	8	56	72	-	65	9	3	14	14	28	M8	8
100	124	8	M10	13,5	M12	25	1/4 G	10,5	19,25	103	22	4	20	10	66,5	86,5	-	80	10	3	14	14	30	M10	10

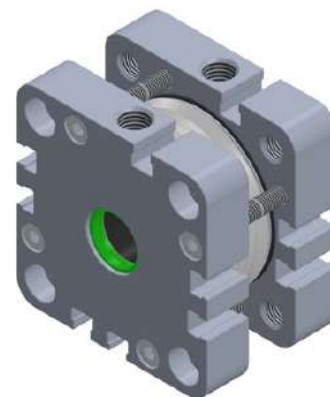
+ = sommare corsa / plus stroke length

++ = sommare 2 x corsa / plus stroke length x 2

## KIT DI MONTAGGIO - MOUNTING KIT

Contenuto del Kit - Kit parts	
Kit cilindro doppio effetto magnetico Kit for double acting magnetic cylinder	
Testata anteriore completa / Complete front cover	
Testata posteriore completa / Complete rear cover	
Pistone completo / Complete piston	
Tappi protezione alimentazioni / Air supply protection caps	
UADE0MMØK001	

Kit disponibile anche nelle altre versioni.  
 Kit available also in other versions.



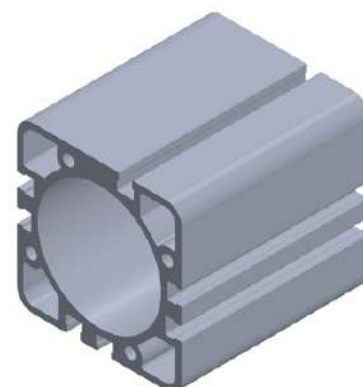
## ASTA STELO - PISTON ROD BAR

Ø cilindro cylinder Ø	Barra stelo - Piston rod bar		Ø stelo Piston rod Ø
	Barra stelo in AISI303 AISI303 piston rod bar	Barra stelo in AISI316 AISI316 piston rod bar	
12	V30BRT0306000	V30BRT0506000	6
16	V30BRT0308000	V30BRT0508000	8
20	V30BRT0310000	V30BRT0510000	10
25	V30BRT0310000	V30BRT0510000	10
32	V30BRT0312000	V30BRT0512000	12
40	V30BRT0312000	V30BRT0512000	12
50	V30BRT0316000	V30BRT0516000	16
63	V30BRT0316000	V30BRT0516000	16
80	V30BRT0320000	V30BRT0520000	20
100	V30BRT0325000	V30BRT0525000	25



## BARRA TUBO - TUBE BAR

Ø cilindro cylinder Ø	Barra tubo - Tube bar	
	Barra tubo in alluminio anodizzato Anodized aluminum tube bar	
12	V30TG20012000	
16	V30TG20016000	
20	V30TG20020000	
25	V30TG20025000	
32	V30TG20032000	
40	V30TG20040000	
50	V30TG20050000	
63	V30TG20063000	
80	V30TG20080000	
100	V30TG200A0000	



Barre lunghezza 3 metri  
 3 meter long bars

Barre tubo e barre stelo disponibili anche lavorate e tagliate a misura/corsa.  
 Tube bars and piston rod bars available also worked and cut at length/stroke.