

2/2 Serie R2HP Normally Closed

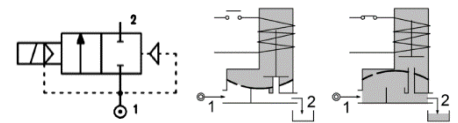
CODE	Connection G ISO 228	Orifice mm	Kv m ³ /h	Differential Pressure (bar)			Coil		Seal	Temp. Range °C
				Min	Max AC DC		Series	Width (mm)		
R2HPCCGZ12//Coil	3/8"	12	2.2	3	150(*)	150(*)	3600	36	PBT+FKM=Z	-10 +140
R2HPCDGZ12//Coil	1/2"	12	2.2	3	150(*)	150(*)	3600	36		

: Please select the sealing type required
 Example: R2HPCDGZ12///360E: ISO 1/2" PBT+FKM
 Coil 230V AC 24VA

(*) for higher pressure over 150bar contact our
 Technical Department

Coils

SERIE	Coil P/N	Voltage	Nominal Power			Electrical connection	Connectors
			AC VA Inrush	AC VA Holding	DC Watt		
Series 3600 Width 36mm	3601	24V DC	-	-	24	DIN 43650A	On Demand
	360B	24V AC	30	24	-		
	360D	110V AC	30	24	-		
	360E	230V AC	30	24	-		



DESCRIPTION

- Solenoid valve 2 ways, indirect operated acting type.
- Brass body CW617N.

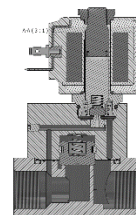
CONSTRUCTION

- Body: Brass CW617N
- Armature tube: Stainless steel Aisi 303
- Plunger and core: Stainless steel 430F
- Springs: Stainless steel Aisi 302
- Seal material: PBT+FKM

FEATURES

- Maximum allowable pressure: 150'bar
- Maximum fluid viscosity: 25cSt (mm²/s)
- Ambient temperature: with class F coil -10°C +55°C
- Preferred mounting position with vertical coil above

OPTIONS



SPARE PARTS

1. Coil fixing nut
2. Coil
3. Mobile plunger assembly
4. Armature tube kit
5. Piston kit