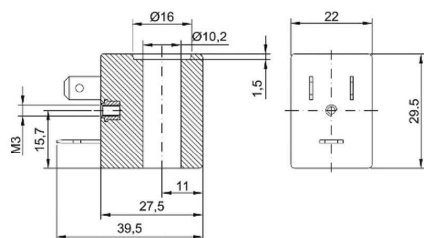
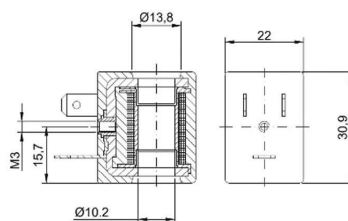


Serie 2800



Serie 2200



**Serie 2800/2200 – 22mm coil – 10mm Armature Tube**

CODE		Voltage - Frequency (V) - (Hz)	Power		Voltage Tolerance %	Service ED %	Note
Class F	Class H		AC (VA)	DC (W)			
280A (*)	282A (*)	12V 50/60Hz	11,5		+15% -10%	100%	Standard Assembly
280B	282B (*)	24V 50/60Hz					
280C (*)	282C (*)	48V 50/60Hz					
280D	282D (*)	110V 50/60Hz					
280E	282E (*)	220/230V 50/60Hz					
2800 (*)	2820 (*)	12V DC	7	+/-10%	100%		
2801	2821 (*)	24V DC					
220A (*)	222A (*)	12V 50/60Hz	8		+15% -10%	100%	Standard and Upside-Down Assembly
220B	222B (*)	24V 50/60Hz					
220C (*)	222C (*)	48V 50/60Hz					
220D (*)	222D (*)	110V 50/60Hz					
220E	222E (*)	220/230V 50/60Hz					
2200 (*)	2220 (*)	12V DC	6,5	+/-10%	100%		
2201	2221 (*)	24V DC					

(\*) Available on request

**DESCRIPTION**

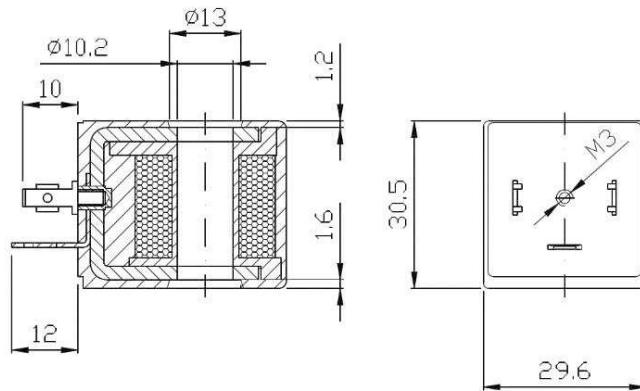
- Encapsulated coil
- Electrical connection according to DIN 43650 B.

**CONSTRUCTION**

- Encapsulation:  
Class F: Fiber-Glass reinforced Nylon  
Class H: Fiber-Glass reinforced Polyester
- Magnetic circuit: Zinc-plated steel
- Windings: Class H insulated copper wires
- Ambient Temperature:  
Class F: -10°C +55°C  
Class H: -10°C +80°C

**OPTIONS**

- Special powers on request
- Special voltages on request


**Serie 3A00 – 30mm Coil – 10mm Armature Tube**

CODE		Voltage - Frequency (V) - (Hz)	Power		Voltage Tolerances %	Service ED %	Note
Class F	Class H		AC (VA)	DC (W)			
3A0A (*)	3A2A (*)	12V 50/60Hz	11		+15%	100%	Standard assembly
3A0B	3A2B (*)	24V 50/60Hz					
3A0C (*)	3A2C (*)	48V 50/60Hz					
3A0D (*)	3A2D (*)	110V 50/60Hz			-10%		
3A0E	3A2E (*)	220/230V 50/60Hz					
3A00 (*)	3A20 (*)	12V DC	8	+/-10%	100%		
3A01	3A21 (*)	24V DC					

(\*) Available on request

**DESCRIPTION**

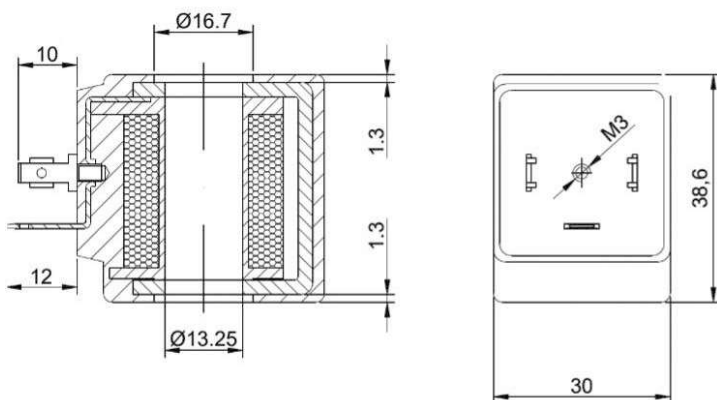
- Encapsulated coil
- Electrical connection according to DIN 43650 A (EN 175301-803 ISO 4400).

**CONSTRUCTION**

- Encapsulation:  
Class F: Fiber-Glass reinforced Nylon  
Class H: Fiber-Glass reinforced Polyester
- Magnetic circuit: Zinc-plated steel
- Windings: Class H insulated copper wires
- Ambient Temperature:  
Class F: -10°C +55°C  
Class H: -10°C +80°C

**OPTIONS**

- Special powers on request
- Special voltages on request



**Serie 3000 – 30mm Coil – 13mm Armature Tube**

CODE		Voltage - Frequency (V) - (Hz)	Power		Voltage Tolerances %	Service ED %	Note
Class F	Class H		AC (VA)	DC (W)			
300A (*)	302A (*)	12V 50/60Hz	15		+15%	100%	Standard assembly
300B	302B (*)	24V 50/60Hz					
300C (*)	302C (*)	48V 50/60Hz					
300D	302D (*)	110V 50/60Hz			-10%		
300E	302E (*)	220/230V 50/60Hz					
3000	3020 (*)	12V DC	10	+/-10%	100%		
3001	3021 (*)	24V DC					

(\*) Available on request

**DESCRIPTION**

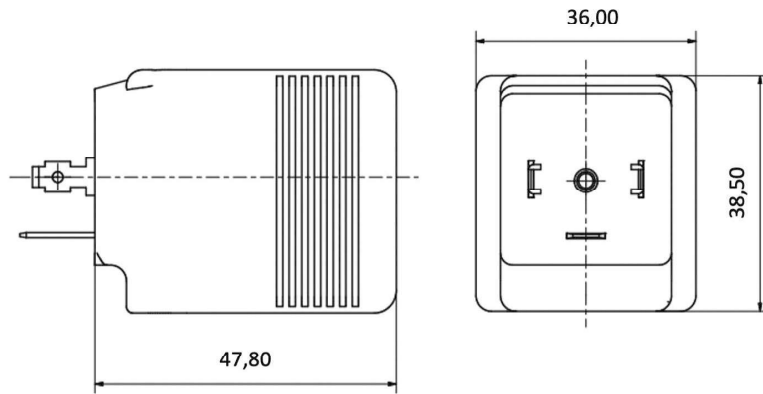
- Encapsulated coil
- Electrical connection according to DIN 43650 A (EN 175301-803 ISO 4400).

**CONSTRUCTION**

- Encapsulation:  
Class F: Fiber-Glass reinforced Nylon  
Class H: Fiber-Glass reinforced Polyester
- Magnetic circuit: Zinc-plated steel
- Windings: Class H insulated copper wires
- Ambient Temperature:  
Class F: -10°C +55°C  
Class H: -10°C +80°C

**OPTIONS**

- Special powers on request
- Special voltages on request


**Serie 3600 – 36mm Coil – 13mm Armature Tube**

CODE		Voltage - Frequency (V) - (Hz)	Power		Voltage Tolerances %	Service ED %	Note
Class F	Class H		AC (VA)	DC (W)			
<b>360A (*)</b>	<b>362A (*)</b>	12V 50/60Hz	30		+15%	100%	Standard assembly
<b>360B</b>	<b>362B (*)</b>	24V 50/60Hz					
<b>360C (*)</b>	<b>362C (*)</b>	48V 50/60Hz					
<b>360D</b>	<b>362D (*)</b>	110V 50/60Hz					
<b>360E</b>	<b>362E (*)</b>	220/230V 50/60Hz					
<b>3600 (*)</b>	<b>3620 (*)</b>	12V DC		24	+/-10%	100%	
<b>3601</b>	<b>3621 (*)</b>	24V DC					

(\*) Available on request

**DESCRIPTION**

- Encapsulated coil
- Electrical connection according to DIN 43650 A (EN 175301-803 ISO 4400).

**CONSTRUCTION**

- Encapsulation:  
Class F: Fiber-Glass reinforced Nylon  
Class H: Fiber-Glass reinforced Polyester
- Magnetic circuit: Zinc-plated steel
- Windings: Class H insulated copper wires
- Ambient Temperature:  
Class F: -10°C +55°C  
Class H: -10°C +80°C

**OPTIONS**

- Special powers on request
- Special voltages on request